

Anti-PKA C gamma Antibody

Rabbit polyclonal antibody to PKA C gamma
Catalog # AP60367

Product Information

Application	WB, IHC
Primary Accession	P22612
Reactivity	Human
Host	Rabbit
Clonality	Polyclonal
Calculated MW	40434

Additional Information

Gene ID	5568
Other Names	cAMP-dependent protein kinase catalytic subunit gamma; PKA C-gamma
Target/Specificity	Recognizes endogenous levels of PKA C gamma protein.
Dilution	WB~~WB (1/500 - 1/1000), IHC (1/100 - 1/200) IHC~~WB (1/500 - 1/1000), IHC (1/100 - 1/200)
Format	Liquid in 0.42% Potassium phosphate, 0.87% Sodium chloride, pH 7.3, 30% glycerol, and 0.09% (W/V) sodium azide.
Storage	Store at -20 °C.Stable for 12 months from date of receipt

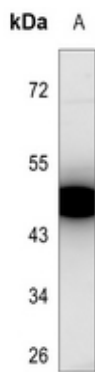
Protein Information

Name	PRKACG
Function	Phosphorylates a large number of substrates in the cytoplasm and the nucleus.
Tissue Location	Testis specific. But important tissues such as brain and ovary have not been analyzed for the content of transcript

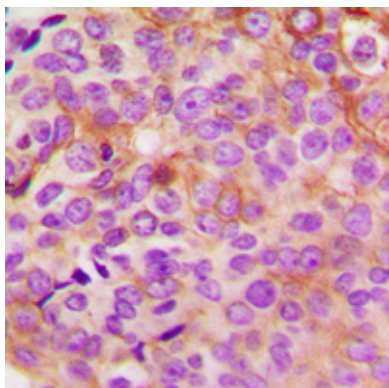
Background

KLH-conjugated synthetic peptide encompassing a sequence within the N-term region of human PKA C gamma. The exact sequence is proprietary.

Images



Western blot analysis of PKA C gamma expression in H1688 (A) whole cell lysates.



Immunohistochemical analysis of PKA C gamma staining in human breast cancer formalin fixed paraffin embedded tissue section. The section was pre-treated using heat mediated antigen retrieval with sodium citrate buffer (pH 6.0). The section was then incubated with the antibody at room temperature and detected using an HRP conjugated compact polymer system. DAB was used as the chromogen. The section was then counterstained with haematoxylin and mounted with DPX.

Please note: All products are 'FOR RESEARCH USE ONLY. NOT FOR USE IN DIAGNOSTIC OR THERAPEUTIC PROCEDURES'.