

Anti-Protein C Antibody

Rabbit polyclonal antibody to Protein C
Catalog # AP60371

Product Information

Application	WB
Primary Accession	P04070
Other Accession	P33587
Reactivity	Human, Mouse, Rat
Host	Rabbit
Clonality	Polyclonal
Calculated MW	52071

Additional Information

Gene ID	5624
Other Names	Vitamin K-dependent protein C; Anticoagulant protein C; Autoprothrombin IIA; Blood coagulation factor XIV
Target/Specificity	KLH-conjugated synthetic peptide encompassing a sequence within the center region of human Protein C. The exact sequence is proprietary.
Dilution	WB~~WB (1/500 - 1/1000)
Format	Liquid in 0.42% Potassium phosphate, 0.87% Sodium chloride, pH 7.3, 30% glycerol, and 0.09% (W/V) sodium azide.
Storage	Store at -20 °C.Stable for 12 months from date of receipt

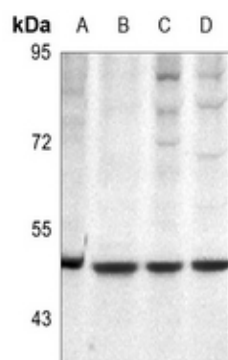
Protein Information

Name	PROC
Function	Protein C is a vitamin K-dependent serine protease that regulates blood coagulation by inactivating factors Va and VIIa in the presence of calcium ions and phospholipids (PubMed: 25618265). Exerts a protective effect on the endothelial cell barrier function (PubMed: 25651845).
Cellular Location	Secreted. Golgi apparatus Endoplasmic reticulum
Tissue Location	Plasma; synthesized in the liver.

Background

KLH-conjugated synthetic peptide encompassing a sequence within the center region of human Protein C. The exact sequence is proprietary.

Images



Western blot analysis of Protein C expression in Raw264.7 (A), HepG2 (B), Jurkat (C), HEK293T (D) whole cell lysates.

Please note: All products are 'FOR RESEARCH USE ONLY. NOT FOR USE IN DIAGNOSTIC OR THERAPEUTIC PROCEDURES'.