

Anti-Prothymosin alpha Antibody

Rabbit polyclonal antibody to Prothymosin alpha

Catalog # AP60375

Product Information

Application	WB
Primary Accession	P06454
Other Accession	P26350
Reactivity	Human, Mouse, Rat, Pig, Bovine
Host	Rabbit
Clonality	Polyclonal
Calculated MW	12203

Additional Information

Gene ID	5757
Other Names	TMSA; Prothymosin alpha
Target/Specificity	KLH-conjugated synthetic peptide encompassing a sequence within the C-term region of human Prothymosin alpha. The exact sequence is proprietary.
Dilution	WB~~WB (1/500 - 1/1000)
Format	Liquid in 0.42% Potassium phosphate, 0.87% Sodium chloride, pH 7.3, 30% glycerol, and 0.09% (W/V) sodium azide.
Storage	Store at -20 °C.Stable for 12 months from date of receipt

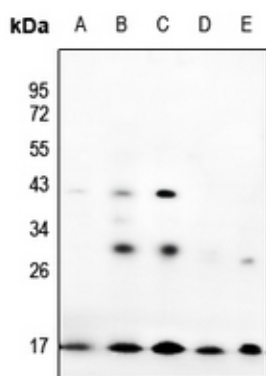
Protein Information

Name	PTMA
Synonyms	TMSA
Function	Prothymosin alpha may mediate immune function by conferring resistance to certain opportunistic infections.
Cellular Location	Nucleus.

Background

KLH-conjugated synthetic peptide encompassing a sequence within the C-term region of human Prothymosin alpha. The exact sequence is proprietary.

Images



Western blot analysis of Prothymosin alpha expression in U87MG (A), Panc1 (B), HCT116 (C), rat testis (D), mouse brain (E) whole cell lysates.

Please note: All products are 'FOR RESEARCH USE ONLY. NOT FOR USE IN DIAGNOSTIC OR THERAPEUTIC PROCEDURES'.