

Anti-PTP1B (pS50) Antibody

Rabbit polyclonal antibody to PTP1B (pS50)

Catalog # AP60376

Product Information

Application	WB, IHC
Primary Accession	P18031
Other Accession	P35821
Reactivity	Human, Mouse, Rat, Zebrafish, Monkey, Pig, Chicken, Drosophila
Host	Rabbit
Clonality	Polyclonal
Calculated MW	49967

Additional Information

Gene ID	5770
Other Names	PTP1B; Tyrosine-protein phosphatase non-receptor type 1; Protein-tyrosine phosphatase 1B; PTP-1B
Target/Specificity	Recognizes endogenous levels of PTP1B (pS50) protein.
Dilution	WB~~WB (1/500 - 1/1000), IHC (1/100 - 1/200) IHC~~WB (1/500 - 1/1000), IHC (1/100 - 1/200)
Format	Liquid in 0.42% Potassium phosphate, 0.87% Sodium chloride, pH 7.3, 30% glycerol, and 0.09% (W/V) sodium azide.
Storage	Store at -20 °C.Stable for 12 months from date of receipt

Protein Information

Name	PTPN1
Synonyms	PTP1B
Function	Tyrosine-protein phosphatase which acts as a regulator of endoplasmic reticulum unfolded protein response. Mediates dephosphorylation of EIF2AK3/PERK; inactivating the protein kinase activity of EIF2AK3/PERK. May play an important role in CKII- and p60c- src-induced signal transduction cascades. May regulate the EFNA5-EPHA3 signaling pathway which modulates cell reorganization and cell-cell repulsion. May also regulate the hepatocyte growth factor receptor signaling pathway through dephosphorylation of MET.
Cellular Location	Endoplasmic reticulum membrane; Peripheral membrane protein; Cytoplasmic side Note=Interacts with EPHA3 at the cell membrane

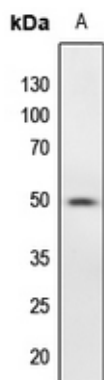
Tissue Location

Expressed in keratinocytes (at protein level).

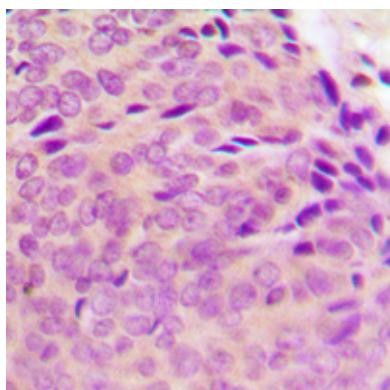
Background

KLH-conjugated synthetic peptide encompassing a sequence within the N-term region of human PTP1B (pS50). The exact sequence is proprietary.

Images



Western blot analysis of PTP1B (pS50) expression in zebrafish (A) whole cell lysates.



Immunohistochemical analysis of PTP1B (pS50) staining in human breast cancer formalin fixed paraffin embedded tissue section. The section was pre-treated using heat mediated antigen retrieval with sodium citrate buffer (pH 6.0). The section was then incubated with the antibody at room temperature and detected using an HRP conjugated compact polymer system. DAB was used as the chromogen. The section was then counterstained with haematoxylin and mounted with DPX.

Please note: All products are 'FOR RESEARCH USE ONLY. NOT FOR USE IN DIAGNOSTIC OR THERAPEUTIC PROCEDURES'.