

# Anti-G15 Antibody

Rabbit polyclonal antibody to G15

Catalog # AP60379

## Product Information

Application	WB, IHC
Primary Accession	<a href="#">P52756</a>
Other Accession	<a href="#">Q91YE7</a>
Reactivity	Human, Mouse, Rat, Bovine
Host	Rabbit
Clonality	Polyclonal
Calculated MW	92154

## Additional Information

Gene ID	10181
Other Names	RNA-binding protein 5; Protein G15; Putative tumor suppressor LUCA15; RNA-binding motif protein 5; Renal carcinoma antigen NY-REN-9
Target/Specificity	Recognizes endogenous levels of G15 protein.
Dilution	WB~~WB (1/500 - 1/1000), IHC (1/100 - 1/200) IHC~~WB (1/500 - 1/1000), IHC (1/100 - 1/200)
Format	Liquid in 0.42% Potassium phosphate, 0.87% Sodium chloride, pH 7.3, 30% glycerol, and 0.09% (W/V) sodium azide.
Storage	Store at -20 °C.Stable for 12 months from date of receipt

## Protein Information

Name	RBM5
Function	Component of the spliceosome A complex. Binds to ssRNA containing the consensus sequence 5'-AGGUAA-3' (PubMed: <a href="#">21256132</a> ). Regulates alternative splicing of a number of mRNAs. May modulate splice site pairing after recruitment of the U1 and U2 snRNPs to the 5' and 3' splice sites of the intron. May both positively and negatively regulate apoptosis by regulating the alternative splicing of several genes involved in this process, including FAS and CASP2/caspase-2. In the case of FAS, promotes exclusion of exon 6 thereby producing a soluble form of FAS that inhibits apoptosis. In the case of CASP2/caspase-2, promotes exclusion of exon 9 thereby producing a catalytically active form of CASP2/Caspase-2 that induces apoptosis.
Cellular Location	Nucleus.

## Tissue Location

Isoform 5 is widely expressed in normal tissues and is expressed at increased levels in T-leukemic cell lines

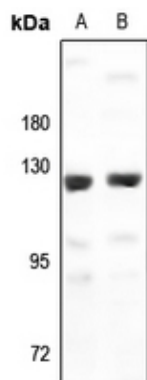
## Background

---

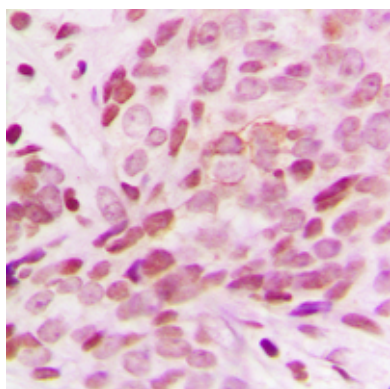
KLH-conjugated synthetic peptide encompassing a sequence within the center region of human G15. The exact sequence is proprietary.

## Images

---



Western blot analysis of G15 expression in K562 (A), Jurkat (B) whole cell lysates.



Immunohistochemical analysis of G15 staining in human breast cancer formalin fixed paraffin embedded tissue section. The section was pre-treated using heat mediated antigen retrieval with sodium citrate buffer (pH 6.0). The section was then incubated with the antibody at room temperature and detected using an HRP conjugated compact polymer system. DAB was used as the chromogen. The section was then counterstained with haematoxylin and mounted with DPX.

Please note: All products are 'FOR RESEARCH USE ONLY. NOT FOR USE IN DIAGNOSTIC OR THERAPEUTIC PROCEDURES'.