

Anti-RET (pY1062) Antibody

Rabbit polyclonal antibody to RET (pY1062)

Catalog # AP60382

Product Information

Application	WB, IF/IC, IHC
Primary Accession	P07949
Other Accession	P35546
Reactivity	Human, Mouse, Rat, Monkey
Host	Rabbit
Clonality	Polyclonal
Calculated MW	124319

Additional Information

Gene ID	5979
Other Names	CDHF12; CDHR16; PTC; RET51; Proto-oncogene tyrosine-protein kinase receptor Ret; Cadherin family member 12; Proto-oncogene c-Ret
Target/Specificity	KLH-conjugated synthetic peptide encompassing a sequence within the C-term region of human RET (pY1062). The exact sequence is proprietary.
Dilution	WB~~WB (1/500 - 1/1000), IHC (1/100 - 1/200), IF/IC (1/100 - 1/500) IF/IC~~N/A IHC~~WB (1/500 - 1/1000), IHC (1/100 - 1/200), IF/IC (1/100 - 1/500)
Format	Liquid in 0.42% Potassium phosphate, 0.87% Sodium chloride, pH 7.3, 30% glycerol, and 0.09% (W/V) sodium azide.
Storage	Store at -20 °C.Stable for 12 months from date of receipt

Protein Information

Name	RET {ECO:0000303 PubMed:2660074, ECO:0000312 HGNC:HGNC:9967}
Function	Receptor tyrosine-protein kinase involved in numerous cellular mechanisms including cell proliferation, neuronal navigation, cell migration, and cell differentiation in response to glia cell line- derived growth family factors (GDNF, NRTN, ARTN, PSPN and GDF15) (PubMed: 20064382 , PubMed: 20616503 , PubMed: 20702524 , PubMed: 21357690 , PubMed: 21454698 , PubMed: 24560924 , PubMed: 28846097 , PubMed: 28846099 , PubMed: 28953886 , PubMed: 31118272). In contrast to most receptor tyrosine kinases, RET requires not only its cognate ligands but also coreceptors, for activation (PubMed: 21994944 , PubMed: 23333276 , PubMed: 28846097 , PubMed: 28846099 , PubMed: 28953886). GDNF ligands (GDNF, NRTN, ARTN, PSPN and GDF15) first bind their corresponding GDNFR

coreceptors (GFRA1, GFRA2, GFRA3, GFRA4 and GFRAL, respectively), triggering RET autophosphorylation and activation, leading to activation of downstream signaling pathways, including the MAPK- and AKT-signaling pathways (PubMed:[21994944](#), PubMed:[23333276](#), PubMed:[24560924](#), PubMed:[25242331](#), PubMed:[28846097](#), PubMed:[28846099](#), PubMed:[28953886](#)). Acts as a dependence receptor via the GDNF-GFRA1 signaling: in the presence of the ligand GDNF in somatotrophs within pituitary, promotes survival and down regulates growth hormone (GH) production, but triggers apoptosis in absence of GDNF (PubMed:[20616503](#), PubMed:[21994944](#)). Required for the molecular mechanisms orchestration during intestine organogenesis via the ARTN-GFRA3 signaling: involved in the development of enteric nervous system and renal organogenesis during embryonic life, and promotes the formation of Peyer's patch-like structures, a major component of the gut-associated lymphoid tissue (By similarity). Mediates, through interaction with GDF15-receptor GFRAL, GDF15-induced cell-signaling in the brainstem which triggers an aversive response, characterized by nausea, vomiting, and/or loss of appetite in response to various stresses (PubMed:[28846097](#), PubMed:[28846099](#), PubMed:[28953886](#)). Modulates cell adhesion via its cleavage by caspase in sympathetic neurons and mediates cell migration in an integrin (e.g. ITGB1 and ITGB3)-dependent manner (PubMed:[20702524](#), PubMed:[21357690](#)). Also active in the absence of ligand, triggering apoptosis through a mechanism that requires receptor intracellular caspase cleavage (PubMed:[21357690](#)). Triggers the differentiation of rapidly adapting (RA) mechanoreceptors (PubMed:[20064382](#)). Involved in the development of the neural crest (By similarity). Regulates nociceptor survival and size (By similarity). Phosphorylates PTK2/FAK1 (PubMed:[21454698](#)).

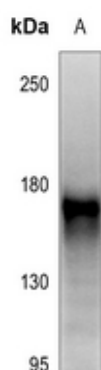
Cellular Location

Cell membrane; Single-pass type I membrane protein. Endosome membrane; Single-pass type I membrane protein Note=Predominantly located on the plasma membrane (PubMed:[23333276](#), PubMed:[9575150](#)). In the presence of SORL1 and GFRA1, directed to endosomes (PubMed:[23333276](#)).

Background

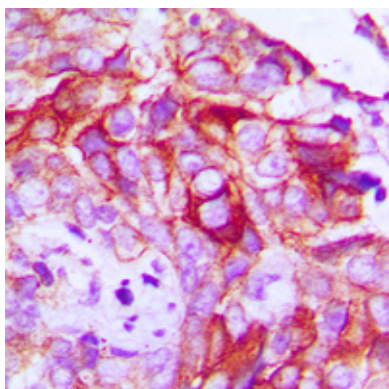
KLH-conjugated synthetic peptide encompassing a sequence within the C-term region of human RET (pY1062). The exact sequence is proprietary.

Images

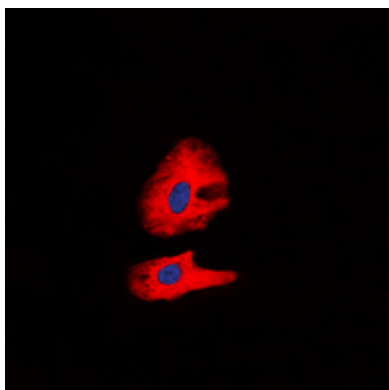


Western blot analysis of RET (pY1062) expression in HEK293T (A) whole cell lysates.

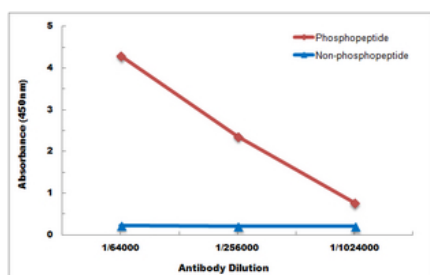
Immunohistochemical analysis of RET (pY1062) staining in human breast cancer formalin fixed paraffin embedded tissue section. The section was pre-treated using heat mediated antigen retrieval with sodium citrate buffer (pH 6.0). The section was then incubated with the



antibody at room temperature and detected using an HRP conjugated compact polymer system. DAB was used as the chromogen. The section was then counterstained with haematoxylin and mounted with DPX.



Immunofluorescent analysis of RET (pY1062) staining in K562 cells. Formalin-fixed cells were permeabilized with 0.1% Triton X-100 in TBS for 5-10 minutes and blocked with 3% BSA-PBS for 30 minutes at room temperature. Cells were probed with the primary antibody in 3% BSA-PBS and incubated overnight at 4 °C in a humidified chamber. Cells were washed with PBST and incubated with a DyLight 594-conjugated secondary antibody (red) in PBS at room temperature in the dark. DAPI was used to stain the cell nuclei (blue).



Direct ELISA antibody dose-response curve using Anti-RET (pY1062) Antibody. Antigen (phosphopeptide and non-phosphopeptide) concentration is 5 ug/ml. Goat Anti-Rabbit IgG (H&L) - HRP was used as the secondary antibody, and signal was developed by TMB substrate.

Please note: All products are 'FOR RESEARCH USE ONLY. NOT FOR USE IN DIAGNOSTIC OR THERAPEUTIC PROCEDURES'.