

Anti-RPL18 Antibody

Rabbit polyclonal antibody to RPL18

Catalog # AP60386

Product Information

Application	WB, IHC
Primary Accession	Q07020
Other Accession	P35980
Reactivity	Human, Mouse, Rat, Monkey, Bovine, Drosophila
Host	Rabbit
Clonality	Polyclonal
Calculated MW	21634

Additional Information

Gene ID	6141
Other Names	60S ribosomal protein L18
Target/Specificity	KLH-conjugated synthetic peptide encompassing a sequence within the center region of human RPL18. The exact sequence is proprietary.
Dilution	WB~~WB (1/500 - 1/1000), IHC (1/100 - 1/200) IHC~~WB (1/500 - 1/1000), IHC (1/100 - 1/200)
Format	Liquid in 0.42% Potassium phosphate, 0.87% Sodium chloride, pH 7.3, 30% glycerol, and 0.09% (W/V) sodium azide.
Storage	Store at -20 °C.Stable for 12 months from date of receipt

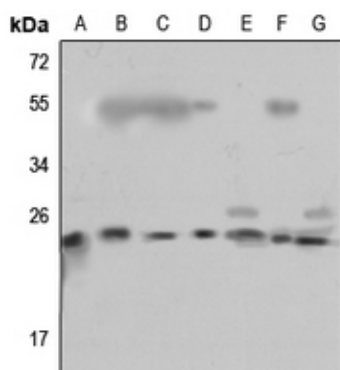
Protein Information

Name	RPL18
Function	Component of the large ribosomal subunit (PubMed: 12962325 , PubMed: 23636399 , PubMed: 25901680 , PubMed: 25957688 , PubMed: 32669547). The ribosome is a large ribonucleoprotein complex responsible for the synthesis of proteins in the cell (PubMed: 12962325 , PubMed: 23636399 , PubMed: 25901680 , PubMed: 25957688 , PubMed: 32669547).
Cellular Location	Cytoplasm, cytosol. Cytoplasm Rough endoplasmic reticulum {ECO:0000250 UniProtKB:Q95342} Note=Detected on cytosolic polysomes (PubMed:25957688). Detected in ribosomes that are associated with the rough endoplasmic reticulum (By similarity). {ECO:0000250 UniProtKB:Q95342, ECO:0000269 PubMed:25957688}

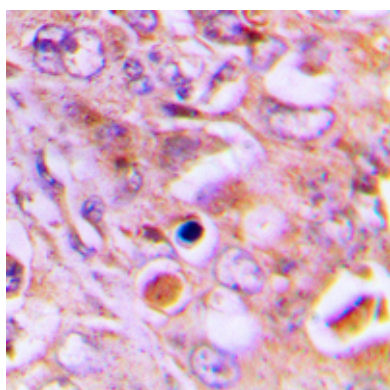
Background

KLH-conjugated synthetic peptide encompassing a sequence within the center region of human RPL18. The exact sequence is proprietary.

Images



Western blot analysis of RPL18 expression in HEK293T (A), Hela (B), U2OS (C), mouse testis (D), mouse kidney (E), rat testis (F), rat kidney (G) whole cell lysates.



Immunohistochemical analysis of RPL18 staining in human lung cancer formalin fixed paraffin embedded tissue section. The section was pre-treated using heat mediated antigen retrieval with sodium citrate buffer (pH 6.0). The section was then incubated with the antibody at room temperature and detected using an HRP conjugated compact polymer system. DAB was used as the chromogen. The section was then counterstained with haematoxylin and mounted with DPX.

Please note: All products are 'FOR RESEARCH USE ONLY. NOT FOR USE IN DIAGNOSTIC OR THERAPEUTIC PROCEDURES'.