

# Anti-RPL7 Antibody

Rabbit polyclonal antibody to RPL7

Catalog # AP60388

## Product Information

---

Application	WB, IHC
Primary Accession	<a href="#">P18124</a>
Other Accession	<a href="#">P14148</a>
Reactivity	Human, Mouse, Rat, Monkey, Pig, Chicken, Bovine
Host	Rabbit
Clonality	Polyclonal
Calculated MW	29226

## Additional Information

---

Gene ID	6129
Other Names	60S ribosomal protein L7
Target/Specificity	Recognizes endogenous levels of RPL7 protein.
Dilution	WB~~WB (1/500 - 1/1000), IHC (1/100 - 1/200) IHC~~WB (1/500 - 1/1000), IHC (1/100 - 1/200)
Format	Liquid in 0.42% Potassium phosphate, 0.87% Sodium chloride, pH 7.3, 30% glycerol, and 0.09% (W/V) sodium azide.
Storage	Store at -20 °C.Stable for 12 months from date of receipt

## Protein Information

---

Name	RPL7
Function	Component of the large ribosomal subunit (PubMed: <a href="#">12962325</a> , PubMed: <a href="#">23636399</a> , PubMed: <a href="#">32669547</a> ). The ribosome is a large ribonucleoprotein complex responsible for the synthesis of proteins in the cell (PubMed: <a href="#">12962325</a> , PubMed: <a href="#">23636399</a> , PubMed: <a href="#">32669547</a> ). Binds to G-rich structures in 28S rRNA and in mRNAs (PubMed: <a href="#">12962325</a> ). Plays a regulatory role in the translation apparatus; inhibits cell-free translation of mRNAs (PubMed: <a href="#">12962325</a> ).
Cellular Location	Cytoplasm.

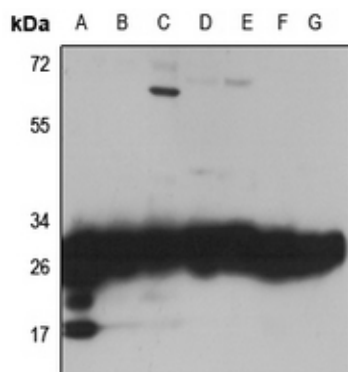
## Background

---

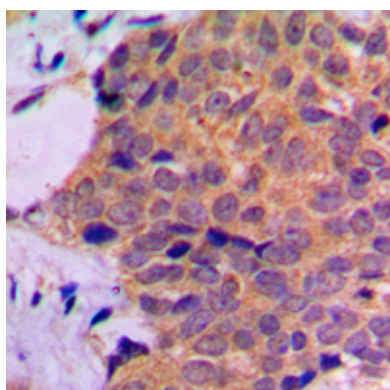
KLH-conjugated synthetic peptide encompassing a sequence within the C-term region of human RPL7. The exact sequence is proprietary.

## Images

---



Western blot analysis of RPL7 expression in HEK293T (A), HeLa (B), HCG27 (C), mouse liver (D), mouse kidney (E), rat liver (F), rat kidney (G) whole cell lysates.



Immunohistochemical analysis of RPL7 staining in human prostate cancer formalin fixed paraffin embedded tissue section. The section was pre-treated using heat mediated antigen retrieval with sodium citrate buffer (pH 6.0). The section was then incubated with the antibody at room temperature and detected using an HRP conjugated compact polymer system. DAB was used as the chromogen. The section was then counterstained with haematoxylin and mounted with DPX.

Please note: All products are 'FOR RESEARCH USE ONLY. NOT FOR USE IN DIAGNOSTIC OR THERAPEUTIC PROCEDURES'.