

# Anti-RPLP2 Antibody

Rabbit polyclonal antibody to RPLP2

Catalog # AP60389

## Product Information

---

<b>Application</b>	WB, IHC
<b>Primary Accession</b>	<a href="#">P05387</a>
<b>Other Accession</b>	<a href="#">P99027</a>
<b>Reactivity</b>	Human, Mouse, Rat, Pig
<b>Host</b>	Rabbit
<b>Clonality</b>	Polyclonal
<b>Calculated MW</b>	11665

## Additional Information

---

<b>Gene ID</b>	6181
<b>Other Names</b>	D11S2243E; RPP2; 60S acidic ribosomal protein P2; Renal carcinoma antigen NY-REN-44
<b>Target/Specificity</b>	Recognizes endogenous levels of RPLP2 protein.
<b>Dilution</b>	WB~~WB (1/500 - 1/1000), IHC (1/100 - 1/200) IHC~~WB (1/500 - 1/1000), IHC (1/100 - 1/200)
<b>Format</b>	Liquid in 0.42% Potassium phosphate, 0.87% Sodium chloride, pH 7.3, 30% glycerol, and 0.09% (W/V) sodium azide.
<b>Storage</b>	Store at -20 °C.Stable for 12 months from date of receipt

## Protein Information

---

<b>Name</b>	RPLP2
<b>Synonyms</b>	D11S2243E, RPP2
<b>Function</b>	Plays an important role in the elongation step of protein synthesis.

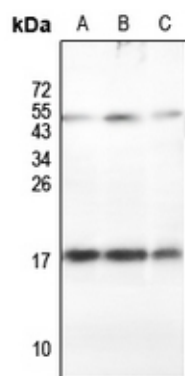
## Background

---

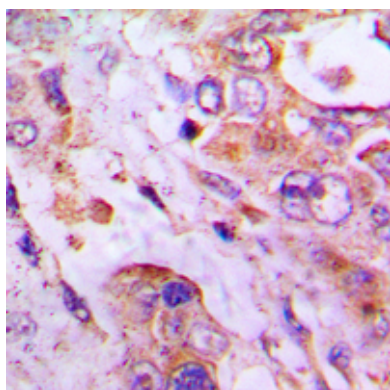
KLH-conjugated synthetic peptide encompassing a sequence within the center region of human RPLP2. The exact sequence is proprietary.

## Images

---



Western blot analysis of RPLP2 expression in HEK293T (A), Myla2059 (B), mouse spleen (C) whole cell lysates.



Immunohistochemical analysis of RPLP2 staining in human lung cancer formalin fixed paraffin embedded tissue section. The section was pre-treated using heat mediated antigen retrieval with sodium citrate buffer (pH 6.0). The section was then incubated with the antibody at room temperature and detected using an HRP conjugated compact polymer system. DAB was used as the chromogen. The section was then counterstained with haematoxylin and mounted with DPX.

Please note: All products are 'FOR RESEARCH USE ONLY. NOT FOR USE IN DIAGNOSTIC OR THERAPEUTIC PROCEDURES'.