

# Anti-TBX3 Antibody

Rabbit polyclonal antibody to TBX3

Catalog # AP60402

## Product Information

Application	WB
Primary Accession	<a href="#">O15119</a>
Reactivity	Human, Mouse, Rat
Host	Rabbit
Clonality	Polyclonal
Calculated MW	79389

## Additional Information

Gene ID	6926
Other Names	T-box transcription factor TBX3; T-box protein 3
Target/Specificity	Recognizes endogenous levels of TBX3 protein.
Dilution	WB~~WB (1/500 - 1/1000)
Format	Liquid in 0.42% Potassium phosphate, 0.87% Sodium chloride, pH 7.3, 30% glycerol, and 0.09% (W/V) sodium azide.
Storage	Store at -20 °C.Stable for 12 months from date of receipt

## Protein Information

Name	TBX3
Function	Transcriptional repressor involved in developmental processes (PubMed: <a href="#">10468588</a> ). Binds to the palindromic T site 5'-TTCACACCTAGGTGTGAA-3' DNA sequence, or a half-site, which are present in the regulatory region of several genes (PubMed: <a href="#">12000749</a> ). Probably plays a role in limb pattern formation (PubMed: <a href="#">10468588</a> ). Required for mammary placode induction, and maintenance of the mammary buds during development (By similarity). Involved in branching morphogenesis in both developing lungs and adult mammary glands, via negative modulation of target genes; acting redundantly with TBX2 (By similarity). Required, together with TBX2, to maintain cell proliferation in the embryonic lung mesenchyme; perhaps acting downstream of SHH, BMP and TGFbeta signaling (By similarity). Involved in modulating early inner ear development, acting independently of, and also redundantly with, TBX2 in different subregions of the developing ear (By similarity). Acts as a negative regulator of PML function in cellular senescence (PubMed: <a href="#">22002537</a> ).



**Cellular Location** Nucleus {ECO:0000255|PROSITE-ProRule:PRU00201}.

**Tissue Location** Widely expressed.

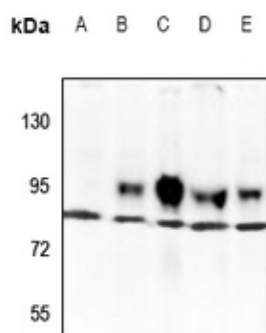
## Background

---

KLH-conjugated synthetic peptide encompassing a sequence within the center region of human TBX3. The exact sequence is proprietary.

## Images

---



Western blot analysis of TBX3 expression in CT26 (A), MEF (B), C6 (C), HEK293T (D), HepG2 (E) whole cell lysates.

Please note: All products are 'FOR RESEARCH USE ONLY. NOT FOR USE IN DIAGNOSTIC OR THERAPEUTIC PROCEDURES'.