

Anti-Thrombospondin 2 Antibody

Rabbit polyclonal antibody to Thrombospondin 2

Catalog # AP60403

Product Information

Application	WB, IHC
Primary Accession	P35442
Other Accession	Q03350
Reactivity	Human, Mouse, Rat, Chicken, Bovine, Drosophila
Host	Rabbit
Clonality	Polyclonal
Calculated MW	129991

Additional Information

Gene ID	7058
Other Names	TSP2; Thrombospondin-2
Target/Specificity	KLH-conjugated synthetic peptide encompassing a sequence within the C-term region of human Thrombospondin 2. The exact sequence is proprietary.
Dilution	WB~~WB (1/500 - 1/1000), IHC (1/50 - 1/200) IHC~~WB (1/500 - 1/1000), IHC (1/50 - 1/200)
Format	Liquid in 0.42% Potassium phosphate, 0.87% Sodium chloride, pH 7.3, 30% glycerol, and 0.09% (W/V) sodium azide.
Storage	Store at -20 °C.Stable for 12 months from date of receipt

Protein Information

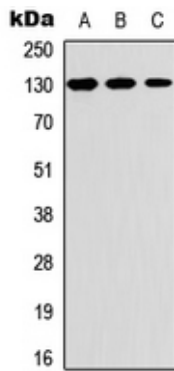
Name	THBS2
Synonyms	TSP2
Function	Adhesive glycoprotein that mediates cell-to-cell and cell-to- matrix interactions. Ligand for CD36 mediating antiangiogenic properties.
Tissue Location	High expression in vertebral disk tissue.

Background

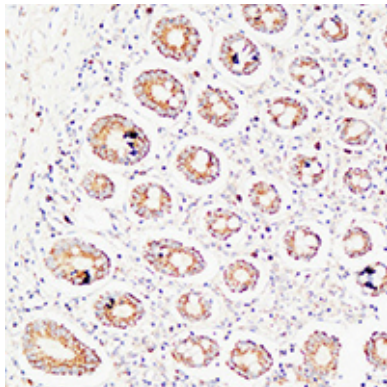
KLH-conjugated synthetic peptide encompassing a sequence within the C-term region of human

Thrombospondin 2. The exact sequence is proprietary.

Images



Western blot analysis of Thrombospondin 2 expression in A549 (A), Raw264.7 (B), PC12 (C) whole cell lysates.



Immunohistochemical analysis of Thrombospondin 2 staining in human colon formalin fixed paraffin embedded tissue section. The section was pre-treated using heat mediated antigen retrieval with sodium citrate buffer (pH 6.0). The section was then incubated with the antibody at room temperature and detected using an HRP conjugated compact polymer system. DAB was used as the chromogen. The section was then counterstained with haematoxylin and mounted with DPX.

Please note: All products are 'FOR RESEARCH USE ONLY. NOT FOR USE IN DIAGNOSTIC OR THERAPEUTIC PROCEDURES'.