

Anti-TMBIM1 Antibody

Rabbit polyclonal antibody to TMBIM1
Catalog # AP60404

Product Information

Application	WB, IHC
Primary Accession	Q969X1
Other Accession	Q8BJZ3
Reactivity	Human, Mouse, Rat
Host	Rabbit
Clonality	Polyclonal
Calculated MW	34607

Additional Information

Gene ID	64114
Other Names	LFG3; RECS1; Protein lifeguard 3; Protein RECS1 homolog; Transmembrane BAX inhibitor motif-containing protein 1
Target/Specificity	Recognizes endogenous levels of TMBIM1 protein.
Dilution	WB~~WB (1/500 - 1/1000), IHC (1/100 - 1/200) IHC~~WB (1/500 - 1/1000), IHC (1/100 - 1/200)
Format	Liquid in 0.42% Potassium phosphate, 0.87% Sodium chloride, pH 7.3, 30% glycerol, and 0.09% (W/V) sodium azide.
Storage	Store at -20 °C.Stable for 12 months from date of receipt

Protein Information

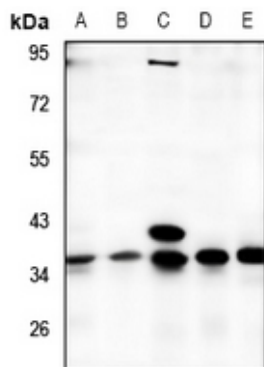
Name	TMBIM1
Synonyms	LFG3, RECS1
Function	Negatively regulates aortic matrix metalloproteinase-9 (MMP9) production and may play a protective role in vascular remodeling.
Cellular Location	Membrane; Multi-pass membrane protein. Lysosome membrane Endosome membrane

Background

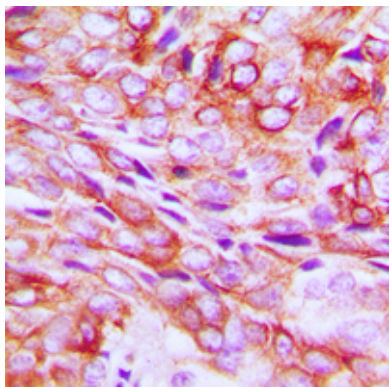
KLH-conjugated synthetic peptide encompassing a sequence within the C-term region of human TMBIM1.

The exact sequence is proprietary.

Images



Western blot analysis of TMBIM1 expression in A549 (A), MCF7 (B), COS7 (C), CT26 (D), PC12 (E) whole cell lysates.



Immunohistochemical analysis of TMBIM1 staining in human breast cancer formalin fixed paraffin embedded tissue section. The section was pre-treated using heat mediated antigen retrieval with sodium citrate buffer (pH 6.0). The section was then incubated with the antibody at room temperature and detected using an HRP conjugated compact polymer system. DAB was used as the chromogen. The section was then counterstained with haematoxylin and mounted with DPX.

Please note: All products are 'FOR RESEARCH USE ONLY. NOT FOR USE IN DIAGNOSTIC OR THERAPEUTIC PROCEDURES'.