

# Anti-CD252 Antibody

Rabbit polyclonal antibody to CD252

Catalog # AP60408

## Product Information

---

<b>Application</b>	WB
<b>Primary Accession</b>	<a href="#">P23510</a>
<b>Other Accession</b>	<a href="#">P43488</a>
<b>Reactivity</b>	Human, Mouse, Rat
<b>Host</b>	Rabbit
<b>Clonality</b>	Polyclonal
<b>Calculated MW</b>	21050

## Additional Information

---

<b>Gene ID</b>	7292
<b>Other Names</b>	TXGP1; Tumor necrosis factor ligand superfamily member 4; Glycoprotein Gp34; OX40 ligand; OX40L; TAX transcriptionally-activated glycoprotein 1; CD252
<b>Target/Specificity</b>	Recognizes endogenous levels of CD252 protein.
<b>Dilution</b>	WB~~WB (1/500 - 1/1000)
<b>Format</b>	Liquid in 0.42% Potassium phosphate, 0.87% Sodium chloride, pH 7.3, 30% glycerol, and 0.09% (W/V) sodium azide.
<b>Storage</b>	Store at -20 °C.Stable for 12 months from date of receipt

## Protein Information

---

<b>Name</b>	TNFSF4
<b>Synonyms</b>	TXGP1
<b>Function</b>	Cytokine that binds to TNFRSF4. Co-stimulates T-cell proliferation and cytokine production.
<b>Cellular Location</b>	Membrane; Single-pass type II membrane protein.

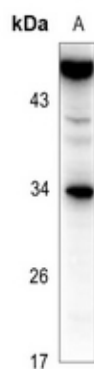
## Background

---

KLH-conjugated synthetic peptide encompassing a sequence within the center region of human CD252. The exact sequence is proprietary.

## Images

---



Western blot analysis of CD252 expression in mouse spleen (A), HEK293T (B) whole cell lysates.

Please note: All products are 'FOR RESEARCH USE ONLY. NOT FOR USE IN DIAGNOSTIC OR THERAPEUTIC PROCEDURES'.