

# Anti-TTF1 Antibody

Rabbit polyclonal antibody to TTF1  
Catalog # AP60414

## Product Information

Application	WB, IHC
Primary Accession	<a href="#">Q15361</a>
Other Accession	<a href="#">Q62187</a>
Reactivity	Human, Mouse, Rat
Host	Rabbit
Clonality	Polyclonal
Calculated MW	103051

## Additional Information

Gene ID	7270
Other Names	Transcription termination factor 1; TTF-1; RNA polymerase I termination factor; Transcription termination factor I; TTF-I
Target/Specificity	Recognizes endogenous levels of TTF1 protein.
Dilution	WB~~WB (1/500 - 1/1000), IHC (1/100 - 1/200) IHC~~WB (1/500 - 1/1000), IHC (1/100 - 1/200)
Format	Liquid in 0.42% Potassium phosphate, 0.87% Sodium chloride, pH 7.3, 30% glycerol, and 0.09% (W/V) sodium azide.
Storage	Store at -20 °C.Stable for 12 months from date of receipt

## Protein Information

Name	TTF1
Function	Multifunctional nucleolar protein that terminates ribosomal gene transcription, mediates replication fork arrest and regulates RNA polymerase I transcription on chromatin. Plays a dual role in rDNA regulation, being involved in both activation and silencing of rDNA transcription. Interaction with BAZ2A/TIP5 recovers DNA-binding activity.
Cellular Location	Nucleus {ECO:0000250 UniProtKB:Q62187}. Nucleus, nucleolus {ECO:0000250 UniProtKB:Q62187}. Nucleus, nucleoplasm {ECO:0000250 UniProtKB:Q62187}. Note=May be localized to the nucleolus in an NPM1/B23-dependent manner. May be displaced from the nucleolus into the nucleoplasm in an CDKN2A/ARF-dependent manner. May shuttle back and forth from nucleoplasm to nucleolus {ECO:0000250 UniProtKB:Q62187}

## Background

---

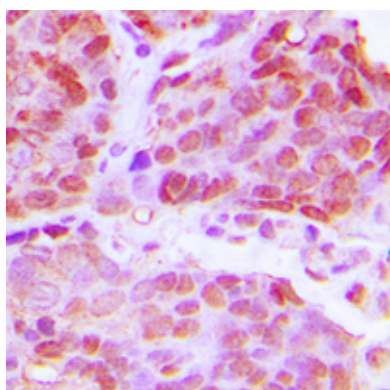
KLH-conjugated synthetic peptide encompassing a sequence within the N-term region of human TTF1. The exact sequence is proprietary.

## Images

---



Western blot analysis of TTF1 expression in HEK293T (A) whole cell lysates.



Immunohistochemical analysis of TTF1 staining in human breast cancer formalin fixed paraffin embedded tissue section. The section was pre-treated using heat mediated antigen retrieval with sodium citrate buffer (pH 6.0). The section was then incubated with the antibody at room temperature and detected using an HRP conjugated compact polymer system. DAB was used as the chromogen. The section was then counterstained with haematoxylin and mounted with DPX.

Please note: All products are 'FOR RESEARCH USE ONLY. NOT FOR USE IN DIAGNOSTIC OR THERAPEUTIC PROCEDURES'.