

# Anti-PS1D Antibody

Rabbit polyclonal antibody to PS1D

Catalog # AP60419

## Product Information

---

<b>Application</b>	WB, IHC
<b>Primary Accession</b>	<a href="#">Q9NP64</a>
<b>Other Accession</b>	<a href="#">Q9ESX4</a>
<b>Reactivity</b>	Human, Mouse, Rat, Monkey
<b>Host</b>	Rabbit
<b>Clonality</b>	Polyclonal
<b>Calculated MW</b>	27570

## Additional Information

---

<b>Gene ID</b>	51538
<b>Other Names</b>	PS1D; Nucleolar protein of 40 kDa; pNO40; Pnn-interacting nucleolar protein; Putative S1 RNA-binding domain protein; PS1D protein; Zinc finger CCHC domain-containing protein 17
<b>Target/Specificity</b>	Recognizes endogenous levels of PS1D protein.
<b>Dilution</b>	WB~~WB (1/500 - 1/1000), IHC (1/100 - 1/200) IHC~~WB (1/500 - 1/1000), IHC (1/100 - 1/200)
<b>Format</b>	Liquid in 0.42% Potassium phosphate, 0.87% Sodium chloride, pH 7.3, 30% glycerol, and 0.09% (W/V) sodium azide.
<b>Storage</b>	Store at -20 °C.Stable for 12 months from date of receipt

## Protein Information

---

<b>Name</b>	ZCCHC17
<b>Synonyms</b>	PS1D
<b>Cellular Location</b>	Nucleus, nucleolus.

## Background

---

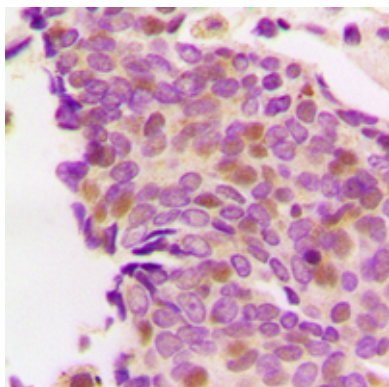
KLH-conjugated synthetic peptide encompassing a sequence within the center region of human PS1D. The exact sequence is proprietary.

## Images

---



Western blot analysis of PS1D expression in mouse spleen (A) whole cell lysates.



Immunohistochemical analysis of PS1D staining in human breast cancer formalin fixed paraffin embedded tissue section. The section was pre-treated using heat mediated antigen retrieval with sodium citrate buffer (pH 6.0). The section was then incubated with the antibody at room temperature and detected using an HRP conjugated compact polymer system. DAB was used as the chromogen. The section was then counterstained with haematoxylin and mounted with DPX.

Please note: All products are 'FOR RESEARCH USE ONLY. NOT FOR USE IN DIAGNOSTIC OR THERAPEUTIC PROCEDURES'.