

Anti-MARCH1 Antibody

Rabbit polyclonal antibody to MARCH1
Catalog # AP60421

Product Information

Application	WB, IHC
Primary Accession	Q8TCQ1
Other Accession	Q6NZQ8
Reactivity	Human, Mouse
Host	Rabbit
Clonality	Polyclonal
Calculated MW	32308

Additional Information

Gene ID	55016
Other Names	RNF171; E3 ubiquitin-protein ligase MARCH1; Membrane-associated RING finger protein 1; Membrane-associated RING-CH protein I; MARCH-I; RING finger protein 171
Target/Specificity	KLH-conjugated synthetic peptide encompassing a sequence within the center region of human MARCH1. The exact sequence is proprietary.
Dilution	WB~~WB (1/500 - 1/1000), IHC (1/100 - 1/200) IHC~~WB (1/500 - 1/1000), IHC (1/100 - 1/200)
Format	Liquid in 0.42% Potassium phosphate, 0.87% Sodium chloride, pH 7.3, 30% glycerol, and 0.09% (W/V) sodium azide.
Storage	Store at -20 °C.Stable for 12 months from date of receipt

Protein Information

Name	MARCHF1 (HGNC:26077)
Synonyms	MARCH1, RNF171
Function	E3 ubiquitin-protein ligase that mediates ubiquitination of TFRC, CD86, FAS and MHC class II proteins, such as HLA-DR alpha and beta, and promotes their subsequent endocytosis and sorting to lysosomes via multivesicular bodies (PubMed: 18389477 , PubMed: 18305173 , PubMed: 21220452 , PubMed: 35045264). By constitutively ubiquitinating MHC class II proteins in immature dendritic cells, down-regulates their cell surface localization thus sequestering them in the intracellular endosomal system. Also regulates insulin sensitivity by controlling surface expression of the insulin receptor subunit beta/INSR by direct ubiquitination and degradation

(PubMed:[27577745](#)).

Cellular Location

Golgi apparatus, trans-Golgi network membrane {ECO:0000250|UniProtKB:Q6NZQ8}; Multi-pass membrane protein. Lysosome membrane; Multi-pass membrane protein. Cytoplasmic vesicle membrane; Multi-pass membrane protein. Late endosome membrane; Multi-pass membrane protein. Early endosome membrane; Multi-pass membrane protein. Cell membrane; Multi-pass membrane protein

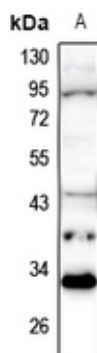
Tissue Location

Expressed in antigen presenting cells, APCs, located in lymph nodes and spleen. Also expressed in lung. Expression is high in follicular B-cells, moderate in dendritic cells and low in splenic T-cells.

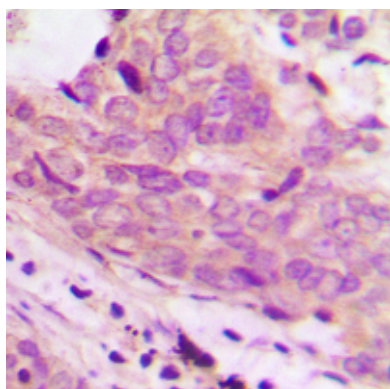
Background

KLH-conjugated synthetic peptide encompassing a sequence within the center region of human MARCH1. The exact sequence is proprietary.

Images



Western blot analysis of MARCH1 expression in Raw264.7 (A) whole cell lysates.



Immunohistochemical analysis of MARCH1 staining in human prostate cancer formalin fixed paraffin embedded tissue section. The section was pre-treated using heat mediated antigen retrieval with sodium citrate buffer (pH 6.0). The section was then incubated with the antibody at room temperature and detected using an HRP conjugated compact polymer system. DAB was used as the chromogen. The section was then counterstained with haematoxylin and mounted with DPX.

Please note: All products are 'FOR RESEARCH USE ONLY. NOT FOR USE IN DIAGNOSTIC OR THERAPEUTIC PROCEDURES'.