

# Anti-ARMCX1 Antibody

Rabbit polyclonal antibody to ARMCX1

Catalog # AP60426

## Product Information

Application	WB
Primary Accession	<a href="#">Q9P291</a>
Other Accession	<a href="#">Q9CX83</a>
Reactivity	Human, Mouse, Rat, Monkey
Host	Rabbit
Clonality	Polyclonal
Calculated MW	49180

## Additional Information

Gene ID	51309
Other Names	ALEX1; Armadillo repeat-containing X-linked protein 1; ARM protein lost in epithelial cancers on chromosome X 1; Protein ALEX1
Target/Specificity	Recognizes endogenous levels of ARMCX1 protein.
Dilution	WB~~WB (1/500 - 1/1000)
Format	Liquid in 0.42% Potassium phosphate, 0.87% Sodium chloride, pH 7.3, 30% glycerol, and 0.09% (W/V) sodium azide.
Storage	Store at -20 °C.Stable for 12 months from date of receipt

## Protein Information

Name	ARMCX1
Synonyms	ALEX1
Function	Regulates mitochondrial transport during axon regeneration. Increases the proportion of motile mitochondria by recruiting stationary mitochondria into the motile pool. Enhances mitochondria movement and neurite growth in both adult axons and embryonic neurons. Promotes neuronal survival and axon regeneration after nerve injury. May link mitochondria to the Trak1-kinesin motor complex via its interaction with MIRO1.
Cellular Location	Mitochondrion {ECO:0000250 UniProtKB:Q9CX83}. Mitochondrion outer membrane {ECO:0000250 UniProtKB:Q9CX83}; Single- pass membrane protein  Expressed at high levels ovary, heart, testis, prostate, brain, spleen and colon.

**Tissue Location**

Expressed at very low levels in liver and thymus. Not expressed in peripheral blood leukocytes. Not or reduced expressed in lung, prostate, colon, pancreas and ovarian carcinomas.

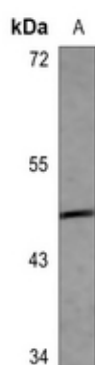
**Background**

---

KLH-conjugated synthetic peptide encompassing a sequence within the N-term region of human ARMCX1. The exact sequence is proprietary.

**Images**

---



Western blot analysis of ARMCX1 expression in rat kidney (A) whole cell lysates.

Please note: All products are 'FOR RESEARCH USE ONLY. NOT FOR USE IN DIAGNOSTIC OR THERAPEUTIC PROCEDURES'.