

Anti-CDC42EP5 Antibody

Rabbit polyclonal antibody to CDC42EP5

Catalog # AP60439

Product Information

Application	WB
Primary Accession	Q6NZY7
Reactivity	Human, Mouse, Rat
Host	Rabbit
Clonality	Polyclonal
Calculated MW	15207

Additional Information

Gene ID	148170
Other Names	BORG3; CEP5; Cdc42 effector protein 5; Binder of Rho GTPases 3
Target/Specificity	Recognizes endogenous levels of CDC42EP5 protein.
Dilution	WB~~WB (1/500 - 1/1000)
Format	Liquid in 0.42% Potassium phosphate, 0.87% Sodium chloride, pH 7.3, 30% glycerol, and 0.09% (W/V) sodium azide.
Storage	Store at -20 °C.Stable for 12 months from date of receipt

Protein Information

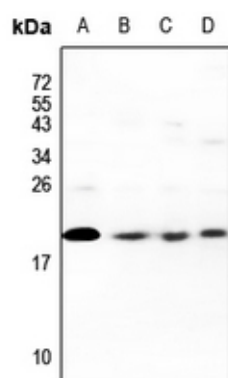
Name	CDC42EP5
Synonyms	BORG3, CEP5
Function	Probably involved in the organization of the actin cytoskeleton. May act downstream of CDC42 to induce actin filament assembly leading to cell shape changes. Induces pseudopodia formation in fibroblasts. Inhibits MAPK8 independently of CDC42 binding. Controls septin organization and this effect is negatively regulated by CDC42 (By similarity).
Cellular Location	Endomembrane system; Peripheral membrane protein. Cytoplasm, cytoskeleton

Background

KLH-conjugated synthetic peptide encompassing a sequence within the N-term region of human CDC42EP5.

The exact sequence is proprietary.

Images



Western blot analysis of CDC42EP5 expression in CT26 (A), PC12 (B), HepG2 (C), A549 (D) whole cell lysates.

Please note: All products are 'FOR RESEARCH USE ONLY. NOT FOR USE IN DIAGNOSTIC OR THERAPEUTIC PROCEDURES'.