

Anti-CDKL1 Antibody

Rabbit polyclonal antibody to CDKL1

Catalog # AP60440

Product Information

Application	WB, IHC
Primary Accession	Q00532
Other Accession	Q8CEQ0
Reactivity	Human, Mouse
Host	Rabbit
Clonality	Polyclonal
Calculated MW	41701

Additional Information

Gene ID	8814
Other Names	Cyclin-dependent kinase-like 1; Protein kinase p42 KKIALRE; Serine/threonine-protein kinase KKIALRE
Target/Specificity	KLH-conjugated synthetic peptide encompassing a sequence within the C-term region of human CDKL1. The exact sequence is proprietary.
Dilution	WB~~WB (1/500 - 1/1000), IHC (1/100 - 1/200) IHC~~WB (1/500 - 1/1000), IHC (1/100 - 1/200)
Format	Liquid in 0.42% Potassium phosphate, 0.87% Sodium chloride, pH 7.3, 30% glycerol, and 0.09% (W/V) sodium azide.
Storage	Store at -20 °C.Stable for 12 months from date of receipt

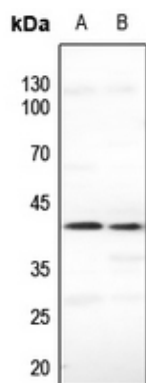
Protein Information

Name	CDKL1 (HGNC:1781)
Cellular Location	Cytoplasm. Nucleus
Tissue Location	Highly expressed in kidney, and to a lower extent in ovary.

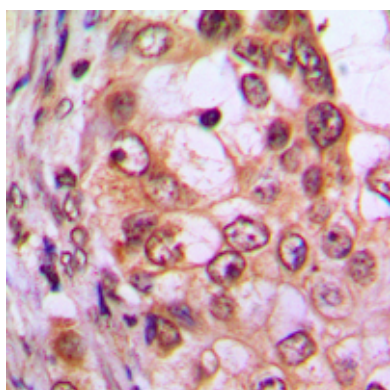
Background

KLH-conjugated synthetic peptide encompassing a sequence within the C-term region of human CDKL1. The exact sequence is proprietary.

Images



Western blot analysis of CDKL1 expression in HEK293T (A), HeLa (B) whole cell lysates.



Immunohistochemical analysis of CDKL1 staining in human breast cancer formalin fixed paraffin embedded tissue section. The section was pre-treated using heat mediated antigen retrieval with sodium citrate buffer (pH 6.0). The section was then incubated with the antibody at room temperature and detected using an HRP conjugated compact polymer system. DAB was used as the chromogen. The section was then counterstained with haematoxylin and mounted with DPX.

Please note: All products are 'FOR RESEARCH USE ONLY. NOT FOR USE IN DIAGNOSTIC OR THERAPEUTIC PROCEDURES'.