

# Anti-CLN5 Antibody

Rabbit polyclonal antibody to CLN5

Catalog # AP60443

## Product Information

Application	WB
Primary Accession	<a href="#">Q75503</a>
Other Accession	<a href="#">Q3UMW8</a>
Reactivity	Human, Mouse, Rat, Bovine, SARS
Host	Rabbit
Clonality	Polyclonal
Calculated MW	41497

## Additional Information

Gene ID	1203
Other Names	Ceroid-lipofuscinosis neuronal protein 5; Protein CLN5
Target/Specificity	KLH-conjugated synthetic peptide encompassing a sequence within the center region of human CLN5. The exact sequence is proprietary.
Dilution	WB~~WB (1/500 - 1/1000)
Format	Liquid in 0.42% Potassium phosphate, 0.87% Sodium chloride, pH 7.3, 30% glycerol, and 0.09% (W/V) sodium azide.
Storage	Store at -20 °C.Stable for 12 months from date of receipt

## Protein Information

Name	CLN5
Synonyms	BMPS {ECO:0000303   PubMed:37708259}
Function	[Bis(monoacylglycero)phosphate synthase CLN5, secreted form]: Catalyzes the synthesis of bis(monoacylglycero)phosphate (BMP) via transacylation of 2 molecules of lysophosphatidylglycerol (LPG) (PubMed: <a href="#">37708259</a> ). BMP also known as lysobisphosphatidic acid plays a key role in the formation of intraluminal vesicles and in maintaining intracellular cholesterol homeostasis (PubMed: <a href="#">37708259</a> ). Can use only LPG as the exclusive lysophospholipid acyl donor for base exchange and displays BMP synthase activity towards various LPGs (LPG 14:0, LPG 16:0, LPG 18:0, LPG 18:1) with a higher preference for longer chain lengths (PubMed: <a href="#">37708259</a> ). Plays a role in influencing the retrograde trafficking of lysosomal sorting receptors SORT1 and IGF2R from the endosomes to the trans-Golgi network by controlling the recruitment of retromer complex to the endosomal membrane (PubMed: <a href="#">22431521</a> ).

Regulates the localization and activation of RAB7A which is required to recruit the retromer complex to the endosomal membrane (PubMed:[22431521](#)).

<b>Cellular Location</b>	[Bis(monoacylglycero)phosphate synthase CLN5, secreted form]: Lysosome
<b>Tissue Location</b>	Ubiquitous..

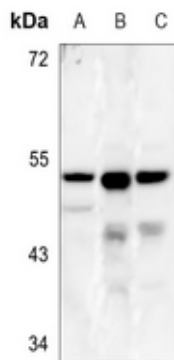
## Background

---

KLH-conjugated synthetic peptide encompassing a sequence within the center region of human CLN5. The exact sequence is proprietary.

## Images

---



Western blot analysis of CLN5 expression in A375 (A), mouse brain (B), rat brain (C) whole cell lysates.

Please note: All products are 'FOR RESEARCH USE ONLY. NOT FOR USE IN DIAGNOSTIC OR THERAPEUTIC PROCEDURES'.