

Anti-Collagen 11 alpha 2 Antibody

Rabbit polyclonal antibody to Collagen 11 alpha 2

Catalog # AP60444

Product Information

| | |
|--------------------------|---|
| Application | WB |
| Primary Accession | P13942 |
| Reactivity | Human, Zebrafish, Monkey, Pig, Drosophila |
| Host | Rabbit |
| Clonality | Polyclonal |
| Calculated MW | 171791 |

Additional Information

| | |
|---------------------------|---|
| Gene ID | 1302 |
| Other Names | Collagen alpha-2(XI) chain |
| Target/Specificity | Recognizes endogenous levels of Collagen 11 alpha 2 protein. |
| Dilution | WB~~WB (1/500 - 1/1000) |
| Format | Liquid in 0.42% Potassium phosphate, 0.87% Sodium chloride, pH 7.3, 30% glycerol, and 0.09% (W/V) sodium azide. |
| Storage | Store at -20 °C.Stable for 12 months from date of receipt |

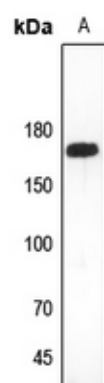
Protein Information

| | |
|--------------------------|---|
| Name | COL11A2 |
| Function | May play an important role in fibrillogenesis by controlling lateral growth of collagen II fibrils. |
| Cellular Location | Secreted, extracellular space, extracellular matrix {ECO:0000255 PROSITE-ProRule:PRU00793} |

Background

KLH-conjugated synthetic peptide encompassing a sequence within the C-term region of human Collagen 11 alpha 2. The exact sequence is proprietary.

Images



Western blot analysis of Collagen 11 alpha 2 expression in zebrafish (A) whole cell lysates.

Please note: All products are 'FOR RESEARCH USE ONLY. NOT FOR USE IN DIAGNOSTIC OR THERAPEUTIC PROCEDURES'.