

Anti-CPT1B Antibody

Rabbit polyclonal antibody to CPT1B

Catalog # AP60445

Product Information

Application	WB, IHC
Primary Accession	Q92523
Reactivity	Human, Mouse, Rat
Host	Rabbit
Clonality	Polyclonal
Calculated MW	87801

Additional Information

Gene ID	1375
Other Names	KIAA1670; Carnitine O-palmitoyltransferase 1, muscle isoform; CPT1-M; Carnitine O-palmitoyltransferase I, muscle isoform; CPT I; CPTI-M; Carnitine palmitoyltransferase 1B; Carnitine palmitoyltransferase I-like protein
Target/Specificity	Recognizes endogenous levels of CPT1B protein.
Dilution	WB~~WB (1/500 - 1/1000), IHC (1/100 - 1/200) IHC~~WB (1/500 - 1/1000), IHC (1/100 - 1/200)
Format	Liquid in 0.42% Potassium phosphate, 0.87% Sodium chloride, pH 7.3, 30% glycerol, and 0.09% (W/V) sodium azide.
Storage	Store at -20 °C.Stable for 12 months from date of receipt

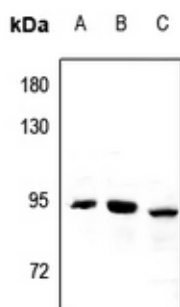
Protein Information

Name	CPT1B
Synonyms	KIAA1670
Function	Catalyzes the transfer of the acyl group of long-chain fatty acid-CoA conjugates onto carnitine, an essential step for the mitochondrial uptake of long-chain fatty acids and their subsequent beta-oxidation in the mitochondrion.
Cellular Location	Mitochondrion outer membrane; Multi-pass membrane protein
Tissue Location	Strong expression in heart and skeletal muscle. No expression in liver and kidney

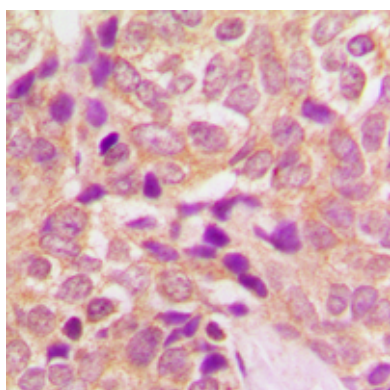
Background

KLH-conjugated synthetic peptide encompassing a sequence within the center region of human CPT1B. The exact sequence is proprietary.

Images



Western blot analysis of CPT1B expression in mouse heart (A), rat heart (B), PC3 (C) whole cell lysates.



Immunohistochemical analysis of CPT1B staining in human breast cancer formalin fixed paraffin embedded tissue section. The section was pre-treated using heat mediated antigen retrieval with sodium citrate buffer (pH 6.0). The section was then incubated with the antibody at room temperature and detected using an HRP conjugated compact polymer system. DAB was used as the chromogen. The section was then counterstained with haematoxylin and mounted with DPX.

Please note: All products are 'FOR RESEARCH USE ONLY. NOT FOR USE IN DIAGNOSTIC OR THERAPEUTIC PROCEDURES'.