

# Anti-EIF4E3 Antibody

Rabbit polyclonal antibody to EIF4E3

Catalog # AP60455

## Product Information

---

<b>Application</b>	WB
<b>Primary Accession</b>	<a href="#">Q8N5X7</a>
<b>Other Accession</b>	<a href="#">Q9DBB5</a>
<b>Reactivity</b>	Human, Mouse, Rat, Monkey, Bovine
<b>Host</b>	Rabbit
<b>Clonality</b>	Polyclonal
<b>Calculated MW</b>	24441

## Additional Information

---

<b>Gene ID</b>	317649
<b>Other Names</b>	Eukaryotic translation initiation factor 4E type 3; eIF-4E type 3; eIF-4E3; eIF4E type 3; eIF4E-3
<b>Target/Specificity</b>	KLH-conjugated synthetic peptide encompassing a sequence within the center region of human EIF4E3. The exact sequence is proprietary.
<b>Dilution</b>	WB~~WB (1/500 - 1/1000)
<b>Format</b>	Liquid in 0.42% Potassium phosphate, 0.87% Sodium chloride, pH 7.3, 30% glycerol, and 0.09% (W/V) sodium azide.
<b>Storage</b>	Store at -20 °C.Stable for 12 months from date of receipt

## Protein Information

---

<b>Name</b>	EIF4E3
<b>Function</b>	Recognizes and binds the 7-methylguanosine-containing mRNA cap during an early step in the initiation of protein synthesis. May act as an inhibitor of EIF4E1 activity (By similarity).

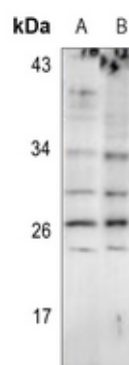
## Background

---

KLH-conjugated synthetic peptide encompassing a sequence within the center region of human EIF4E3. The exact sequence is proprietary.

## Images

---



Western blot analysis of EIF4E3 expression in Hela (A), LO2 (B), CT26 (C) whole cell lysates.

Please note: All products are 'FOR RESEARCH USE ONLY. NOT FOR USE IN DIAGNOSTIC OR THERAPEUTIC PROCEDURES'.