

Anti-EPN3 Antibody

Rabbit polyclonal antibody to EPN3

Catalog # AP60458

Product Information

Application	WB, IHC
Primary Accession	Q9H201
Reactivity	Human, Mouse, Rat
Host	Rabbit
Clonality	Polyclonal
Calculated MW	68222

Additional Information

Gene ID	55040
Other Names	Epsin-3; EPS-15-interacting protein 3
Target/Specificity	Recognizes endogenous levels of EPN3 protein.
Dilution	WB~~WB (1/500 - 1/1000), IHC (1/100 - 1/200) IHC~~WB (1/500 - 1/1000), IHC (1/100 - 1/200)
Format	Liquid in 0.42% Potassium phosphate, 0.87% Sodium chloride, pH 7.3, 30% glycerol, and 0.09% (W/V) sodium azide.
Storage	Store at -20 °C.Stable for 12 months from date of receipt

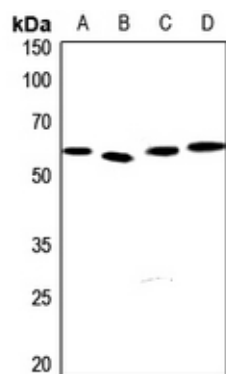
Protein Information

Name	EPN3
Cellular Location	Cytoplasm. Cytoplasm, perinuclear region Cytoplasmic vesicle, clathrin-coated vesicle. Nucleus Note=Concentrated in the perinuclear region and associated with clathrin-coated vesicles close to the cell periphery. May shuttle to the nucleus
Tissue Location	Detected in migrating keratinocytes from wounded skin, but not in differentiating keratinocytes or in normal skin Detected in chronic wounds, basal cell carcinoma and ulcerative colitis.

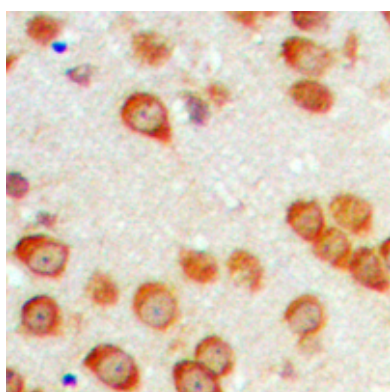
Background

KLH-conjugated synthetic peptide encompassing a sequence within the center region of human EPN3. The exact sequence is proprietary.

Images



Western blot analysis of EPN3 expression in HEK293T (A), H446 (B), mouse testis (C), rat testis (D) whole cell lysates.



Immunohistochemical analysis of EPN3 staining in human brain formalin fixed paraffin embedded tissue section. The section was pre-treated using heat mediated antigen retrieval with sodium citrate buffer (pH 6.0). The section was then incubated with the antibody at room temperature and detected using an HRP conjugated compact polymer system. DAB was used as the chromogen. The section was then counterstained with haematoxylin and mounted with DPX.

Please note: All products are 'FOR RESEARCH USE ONLY. NOT FOR USE IN DIAGNOSTIC OR THERAPEUTIC PROCEDURES'.