

# Anti-Fibulin 5 Antibody

Rabbit polyclonal antibody to Fibulin 5  
Catalog # AP60461

## Product Information

Application	WB
Primary Accession	<a href="#">Q9UBX5</a>
Other Accession	<a href="#">Q9WVH9</a>
Reactivity	Human, Mouse, Rat, Bovine
Host	Rabbit
Clonality	Polyclonal
Calculated MW	50180

## Additional Information

Gene ID	10516
Other Names	DANCE; Fibulin-5; FIBL-5; Developmental arteries and neural crest EGF-like protein; Dance; Urine p50 protein; UP50
Target/Specificity	Recognizes endogenous levels of Fibulin 5 protein.
Dilution	WB~~WB (1/500 - 1/1000)
Format	Liquid in 0.42% Potassium phosphate, 0.87% Sodium chloride, pH 7.3, 30% glycerol, and 0.09% (W/V) sodium azide.
Storage	Store at -20 °C.Stable for 12 months from date of receipt

## Protein Information

Name	FBLN5
Synonyms	DANCE
Function	Essential for elastic fiber formation, is involved in the assembly of continuous elastin (ELN) polymer and promotes the interaction of microfibrils and ELN (PubMed: <a href="#">18185537</a> ). Stabilizes and organizes elastic fibers in the skin, lung and vasculature (By similarity). Promotes adhesion of endothelial cells through interaction of integrins and the RGD motif. Vascular ligand for integrin receptors which may play a role in vascular development and remodeling (PubMed: <a href="#">10428823</a> ). May act as an adapter that mediates the interaction between FBN1 and ELN (PubMed: <a href="#">17255108</a> ).
Cellular Location	Secreted. Secreted, extracellular space, extracellular matrix. Note=co-localizes with ELN in elastic fibers.

## Tissue Location

Expressed in skin fibroblasts (at protein level) (PubMed:17035250). Expressed predominantly in heart, ovary, and colon but also in kidney, pancreas, testis, lung and placenta. Not detectable in brain, liver, thymus, prostate, or peripheral blood leukocytes (PubMed:10428823).

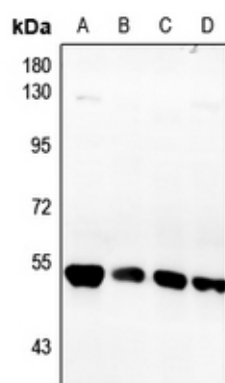
## Background

---

KLH-conjugated synthetic peptide encompassing a sequence within the center region of human Fibulin 5. The exact sequence is proprietary.

## Images

---



Western blot analysis of Fibulin 5 expression in Hela (A), LOVO (B), CT26 (C), PC12 (D) whole cell lysates.

Please note: All products are 'FOR RESEARCH USE ONLY. NOT FOR USE IN DIAGNOSTIC OR THERAPEUTIC PROCEDURES'.