

Anti-FTH1 Antibody

Rabbit polyclonal antibody to FTH1

Catalog # AP60462

Product Information

Application	WB
Primary Accession	P02794
Other Accession	P09528
Reactivity	Human, Mouse, Rat, Rabbit, Monkey, Drosophila
Host	Rabbit
Clonality	Polyclonal
Calculated MW	21226

Additional Information

Gene ID	2495
Other Names	FTH; FTHL6; Ferritin heavy chain; Ferritin H subunit; Cell proliferation-inducing gene 15 protein
Target/Specificity	KLH-conjugated synthetic peptide encompassing a sequence within the center region of human FTH1. The exact sequence is proprietary.
Dilution	WB~~WB (1/500 - 1/1000)
Format	Liquid in 0.42% Potassium phosphate, 0.87% Sodium chloride, pH 7.3, 30% glycerol, and 0.09% (W/V) sodium azide.
Storage	Store at -20 °C.Stable for 12 months from date of receipt

Protein Information

Name	FTH1
Synonyms	FTH, FTHL6
Function	Stores iron in a soluble, non-toxic, readily available form. Important for iron homeostasis. Has ferroxidase activity (PubMed: 9003196). Iron is taken up in the ferrous form and deposited as ferric hydroxides after oxidation (PubMed: 9003196). Also plays a role in delivery of iron to cells (By similarity). Mediates iron uptake in capsule cells of the developing kidney (By similarity). Delivery to lysosomes is mediated by the cargo receptor NCOA4 for autophagic degradation and release of iron (PubMed: 24695223 , PubMed: 26436293).
Cellular Location	Cytoplasm. Lysosome. Cytoplasmic vesicle, autophagosome

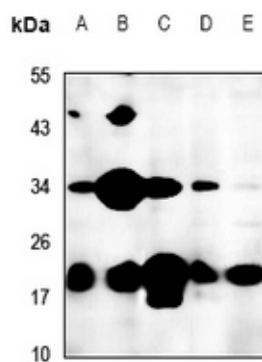
Tissue Location

Expressed in the liver.

Background

KLH-conjugated synthetic peptide encompassing a sequence within the center region of human FTH1. The exact sequence is proprietary.

Images



Western blot analysis of FTH1 expression in LO2 (A), C6 (B), MEF (C), U87MG (D), HepG2 (E) whole cell lysates.

Please note: All products are 'FOR RESEARCH USE ONLY. NOT FOR USE IN DIAGNOSTIC OR THERAPEUTIC PROCEDURES'.