

Anti-Islet-2 Antibody

Rabbit polyclonal antibody to Islet-2
Catalog # AP60472

Product Information

Application	WB, IF/IC
Primary Accession	Q96A47
Other Accession	Q9CXV0
Reactivity	Human, Mouse, Rat, Monkey
Host	Rabbit
Clonality	Polyclonal
Calculated MW	39768

Additional Information

Gene ID	64843
Other Names	Insulin gene enhancer protein ISL-2; Islet-2
Target/Specificity	Recognizes endogenous levels of Islet-2 protein.
Dilution	WB~~WB (1/500 - 1/1000), IF/IC (1/100 - 1/500) IF/IC~~N/A
Format	Liquid in 0.42% Potassium phosphate, 0.87% Sodium chloride, pH 7.3, 30% glycerol, and 0.09% (W/V) sodium azide.
Storage	Store at -20 °C.Stable for 12 months from date of receipt

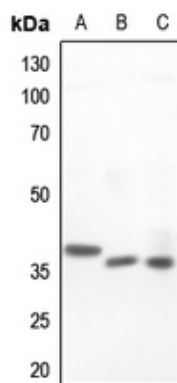
Protein Information

Name	ISL2
Function	Transcriptional factor that defines subclasses of motoneurons that segregate into columns in the spinal cord and select distinct axon pathways.
Cellular Location	Nucleus {ECO:0000255 PROSITE-ProRule:PRU00108}.

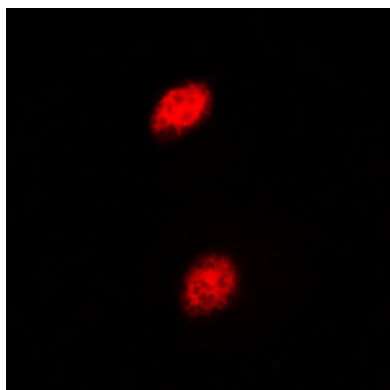
Background

KLH-conjugated synthetic peptide encompassing a sequence within the center region of human Islet-2. The exact sequence is proprietary.

Images



Western blot analysis of Islet-2 expression in Hela (A), mouse liver (B), rat liver (C) whole cell lysates.



Immunofluorescent analysis of Islet-2 staining in HEK293T cells. Formalin-fixed cells were permeabilized with 0.1% Triton X-100 in TBS for 5-10 minutes and blocked with 3% BSA-PBS for 30 minutes at room temperature. Cells were probed with the primary antibody in 3% BSA-PBS and incubated overnight at 4 °C in a humidified chamber. Cells were washed with PBST and incubated with a DyLight 594-conjugated secondary antibody (red) in PBS at room temperature in the dark. DAPI was used to stain the cell nuclei (blue).

Please note: All products are 'FOR RESEARCH USE ONLY. NOT FOR USE IN DIAGNOSTIC OR THERAPEUTIC PROCEDURES'.