

Anti-Laminin gamma 3 Antibody

Rabbit polyclonal antibody to Laminin gamma 3

Catalog # AP60478

Product Information

Application	WB
Primary Accession	Q9Y6N6
Reactivity	Human
Host	Rabbit
Clonality	Polyclonal
Calculated MW	171227

Additional Information

Gene ID	10319
Other Names	Laminin subunit gamma-3; Laminin-12 subunit gamma; Laminin-14 subunit gamma; Laminin-15 subunit gamma
Target/Specificity	Recognizes endogenous levels of Laminin gamma 3 protein.
Dilution	WB~~WB (1/500 - 1/1000)
Format	Liquid in 0.42% Potassium phosphate, 0.87% Sodium chloride, pH 7.3, 30% glycerol, and 0.09% (W/V) sodium azide.
Storage	Store at -20 °C.Stable for 12 months from date of receipt

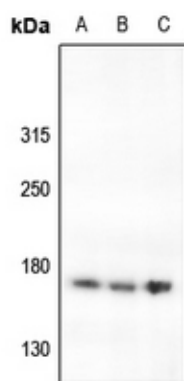
Protein Information

Name	LAMC3
Function	Binding to cells via a high affinity receptor, laminin is thought to mediate the attachment, migration and organization of cells into tissues during embryonic development by interacting with other extracellular matrix components.
Cellular Location	Secreted, extracellular space, extracellular matrix, basement membrane
Tissue Location	Broadly expressed in: skin, heart, lung, and the reproductive tracts

Background

KLH-conjugated synthetic peptide encompassing a sequence within the C-term region of human Laminin gamma 3. The exact sequence is proprietary.

Images



Western blot analysis of Laminin gamma 3 expression in A549 (A), PC3 (B), A2780 (C) whole cell lysates.

Please note: All products are 'FOR RESEARCH USE ONLY. NOT FOR USE IN DIAGNOSTIC OR THERAPEUTIC PROCEDURES'.