

Anti-MRPL35 Antibody

Rabbit polyclonal antibody to MRPL35

Catalog # AP60485

Product Information

Application	WB
Primary Accession	Q9NZE8
Reactivity	Human
Host	Rabbit
Clonality	Polyclonal
Calculated MW	21514

Additional Information

Gene ID	51318
Other Names	39S ribosomal protein L35 mitochondrial; L35mt; MRP-L35
Target/Specificity	KLH-conjugated synthetic peptide encompassing a sequence within the center region of human MRPL35. The exact sequence is proprietary.
Dilution	WB~~WB (1/500 - 1/1000)
Format	Liquid in 0.42% Potassium phosphate, 0.87% Sodium chloride, pH 7.3, 30% glycerol, and 0.09% (W/V) sodium azide.
Storage	Store at -20 °C.Stable for 12 months from date of receipt

Protein Information

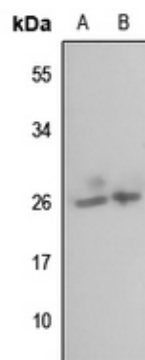
Name	MRPL35
Cellular Location	Mitochondrion

Background

KLH-conjugated synthetic peptide encompassing a sequence within the center region of human MRPL35. The exact sequence is proprietary.

Images

Western blot analysis of MRPL35 expression in HEK293T (A), Hela (B) whole cell lysates.



Please note: All products are 'FOR RESEARCH USE ONLY. NOT FOR USE IN DIAGNOSTIC OR THERAPEUTIC PROCEDURES'.