

Anti-MRPL40 Antibody

Rabbit polyclonal antibody to MRPL40

Catalog # AP60486

Product Information

Application	WB, IHC
Primary Accession	Q9NQ50
Other Accession	Q9Z2Q5
Reactivity	Human, Mouse, Rat
Host	Rabbit
Clonality	Polyclonal
Calculated MW	24490

Additional Information

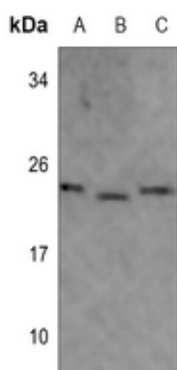
Gene ID	64976
Other Names	NLVCF; URIM; 39S ribosomal protein L40 mitochondrial; L40mt; MRP-L40; Nuclear localization signal-containing protein deleted in velocardiofacial syndrome; Up-regulated in metastasis
Target/Specificity	Recognizes endogenous levels of MRPL40 protein.
Dilution	WB~~WB (1/500 - 1/1000), IHC (1/100 - 1/200) IHC~~WB (1/500 - 1/1000), IHC (1/100 - 1/200)
Format	Liquid in 0.42% Potassium phosphate, 0.87% Sodium chloride, pH 7.3, 30% glycerol, and 0.09% (W/V) sodium azide.
Storage	Store at -20 °C.Stable for 12 months from date of receipt

Protein Information

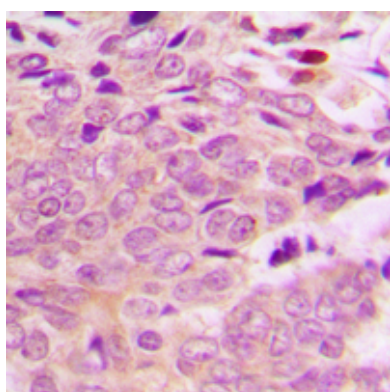
Name	MRPL40
Synonyms	NLVCF, URIM
Cellular Location	Mitochondrion
Tissue Location	Ubiquitous..

Background

KLH-conjugated synthetic peptide encompassing a sequence within the center region of human MRPL40. The exact sequence is proprietary.



Western blot analysis of MRPL40 expression in mouse muscle (A), mouse liver (B), rat muscle (C) whole cell lysates.



Immunohistochemical analysis of MRPL40 staining in human breast cancer formalin fixed paraffin embedded tissue section. The section was pre-treated using heat mediated antigen retrieval with sodium citrate buffer (pH 6.0). The section was then incubated with the antibody at room temperature and detected using an HRP conjugated compact polymer system. DAB was used as the chromogen. The section was then counterstained with haematoxylin and mounted with DPX.

Please note: All products are 'FOR RESEARCH USE ONLY. NOT FOR USE IN DIAGNOSTIC OR THERAPEUTIC PROCEDURES'.