

Anti-MRPL51 Antibody

Rabbit polyclonal antibody to MRPL51

Catalog # AP60487

Product Information

Application	WB, IHC
Primary Accession	Q4U2R6
Other Accession	Q9CPY1
Reactivity	Human, Mouse, Rat, Monkey
Host	Rabbit
Clonality	Polyclonal
Calculated MW	15095

Additional Information

Gene ID	51258
Other Names	MRP64; 39S ribosomal protein L51 mitochondrial; L51mt; MRP-L51; bMRP-64; bMRP64
Target/Specificity	Recognizes endogenous levels of MRPL51 protein.
Dilution	WB~~WB (1/500 - 1/1000), IHC (1/100 - 1/200) IHC~~WB (1/500 - 1/1000), IHC (1/100 - 1/200)
Format	Liquid in 0.42% Potassium phosphate, 0.87% Sodium chloride, pH 7.3, 30% glycerol, and 0.09% (W/V) sodium azide.
Storage	Store at -20 °C.Stable for 12 months from date of receipt

Protein Information

Name	MRPL51
Synonyms	MRP64
Cellular Location	Mitochondrion

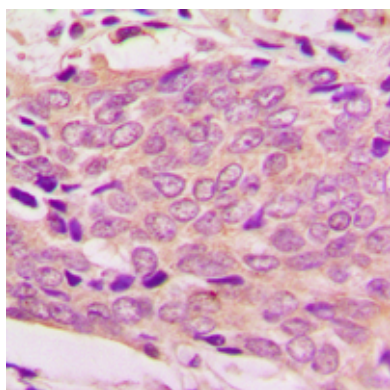
Background

KLH-conjugated synthetic peptide encompassing a sequence within the center region of human MRPL51. The exact sequence is proprietary.

Images



Western blot analysis of MRPL51 expression in Jurkat (A), rat testis (B) whole cell lysates.



Immunohistochemical analysis of MRPL51 staining in human breast cancer formalin fixed paraffin embedded tissue section. The section was pre-treated using heat mediated antigen retrieval with sodium citrate buffer (pH 6.0). The section was then incubated with the antibody at room temperature and detected using an HRP conjugated compact polymer system. DAB was used as the chromogen. The section was then counterstained with haematoxylin and mounted with DPX.

Please note: All products are 'FOR RESEARCH USE ONLY. NOT FOR USE IN DIAGNOSTIC OR THERAPEUTIC PROCEDURES'.