

# Anti-MRPL54 Antibody

Rabbit polyclonal antibody to MRPL54

Catalog # AP60488

## Product Information

---

Application	WB, IHC
Primary Accession	<a href="#">Q6P161</a>
Reactivity	Human
Host	Rabbit
Clonality	Polyclonal
Calculated MW	15819

## Additional Information

---

Gene ID	116541
Other Names	39S ribosomal protein L54 mitochondrial; L54mt; MRP-L54
Target/Specificity	KLH-conjugated synthetic peptide encompassing a sequence within the center region of human MRPL54. The exact sequence is proprietary.
Dilution	WB~~WB (1/500 - 1/1000), IHC (1/100 - 1/200) IHC~~WB (1/500 - 1/1000), IHC (1/100 - 1/200)
Format	Liquid in 0.42% Potassium phosphate, 0.87% Sodium chloride, pH 7.3, 30% glycerol, and 0.09% (W/V) sodium azide.
Storage	Store at -20 °C.Stable for 12 months from date of receipt

## Protein Information

---

Name	MRPL54
Cellular Location	Mitochondrion

## Background

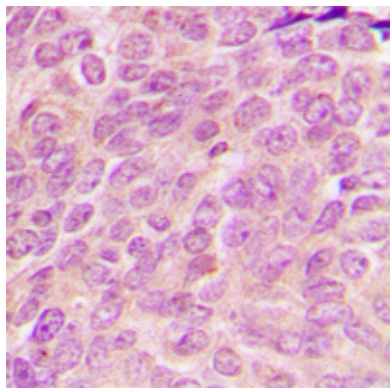
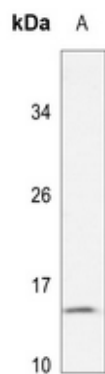
---

KLH-conjugated synthetic peptide encompassing a sequence within the center region of human MRPL54. The exact sequence is proprietary.

## Images

---

Western blot analysis of MRPL54 expression in Jurkat (A) whole cell lysates.



Immunohistochemical analysis of MRPL54 staining in human breast cancer formalin fixed paraffin embedded tissue section. The section was pre-treated using heat mediated antigen retrieval with sodium citrate buffer (pH 6.0). The section was then incubated with the antibody at room temperature and detected using an HRP conjugated compact polymer system. DAB was used as the chromogen. The section was then counterstained with haematoxylin and mounted with DPX.

Please note: All products are 'FOR RESEARCH USE ONLY. NOT FOR USE IN DIAGNOSTIC OR THERAPEUTIC PROCEDURES'.