

Anti-GPR120 Antibody

Rabbit polyclonal antibody to GPR120

Catalog # AP60493

Product Information

Application	WB
Primary Accession	Q5NUL3
Reactivity	Human, Rat
Host	Rabbit
Clonality	Polyclonal
Calculated MW	40494

Additional Information

Gene ID	338557
Other Names	GPR120; GPR129; O3FAR1; PGR4; Free fatty acid receptor 4; G-protein coupled receptor 120; G-protein coupled receptor 129; G-protein coupled receptor GT01; G-protein coupled receptor PGR4; Omega-3 fatty acid receptor 1
Target/Specificity	Recognizes endogenous levels of GPR120 protein.
Dilution	WB~~WB (1/500 - 1/1000)
Format	Liquid in 0.42% Potassium phosphate, 0.87% Sodium chloride, pH 7.3, 30% glycerol, and 0.09% (W/V) sodium azide.
Storage	Store at -20 °C.Stable for 12 months from date of receipt

Protein Information

Name	FFAR4 (HGNC:19061)
Function	[Isoform 2]: G-protein-coupled receptor for long-chain fatty acids (LCFAs) with a major role in adipogenesis, energy metabolism and inflammation. Signals via G-protein and beta-arrestin pathways (PubMed: 22282525 , PubMed: 22343897 , PubMed: 24742677 , PubMed: 24817122 , PubMed: 27852822). LCFAs sensing initiates activation of phosphoinositidase C-linked G proteins GNAQ and GNA11 (G(q)/G(11)), inducing a variety of cellular responses via second messenger pathways such as intracellular calcium mobilization, modulation of cyclic adenosine monophosphate (cAMP) production, and mitogen-activated protein kinases (MAPKs) (PubMed: 22282525 , PubMed: 22343897 , PubMed: 24742677 , PubMed: 27852822). After LCFAs binding, associates with beta-arrestin ARRB2 that acts as an adapter protein coupling the receptor to specific downstream signaling pathways, as well as mediating receptor endocytosis (PubMed: 22282525 , PubMed: 24817122). In response to dietary fats, plays an

important role in the regulation of adipocyte proliferation and differentiation (By similarity). Acts as a receptor for omega-3 polyunsaturated fatty acids (PUFAs) at primary cilium of perivascular preadipocytes, initiating an adipogenic program via cAMP and CTCF-dependent chromatin remodeling that ultimately results in transcriptional activation of adipogenic genes and cell cycle entry (By similarity). Induces differentiation of brown adipocytes probably via autocrine and endocrine functions of FGF21 hormone (By similarity). Activates brown adipocytes by initiating intracellular calcium signaling that leads to mitochondrial depolarization and fission, and overall increased mitochondrial respiration (By similarity). Consequently stimulates fatty acid uptake and oxidation in mitochondria together with UCP1-mediated thermogenic respiration, eventually reducing fat mass (By similarity). Regulates bi-potential differentiation of bone marrow mesenchymal stem cells toward osteoblasts or adipocytes likely by up-regulating distinct integrins (By similarity). In response to dietary fats regulates hormone secretion and appetite (By similarity). Stimulates GIP and GLP1 secretion from enteroendocrine cells as well as GCG secretion in pancreatic alpha cells, thereby playing a role in the regulation of blood glucose levels (By similarity). Negatively regulates glucose-induced SST secretion in pancreatic delta cells (By similarity). Mediates LCFAs inhibition of GHRL secretion, an appetite-controlling hormone (By similarity). In taste buds, contributes to sensing of dietary fatty acids by the gustatory system (By similarity). During the inflammatory response, promotes anti-inflammatory M2 macrophage differentiation in adipose tissue (By similarity). Mediates the anti-inflammatory effects of omega-3 PUFAs via inhibition of NLRP3 inflammasome activation (PubMed:[23809162](#)). In this pathway, interacts with adapter protein ARRB2 and inhibits the priming step triggered by Toll-like receptors (TLRs) at the level of TAK1 and TAB1 (By similarity). Further inhibits the activation step when ARRB2 directly associates with NLRP3, leading to inhibition of pro-inflammatory cytokine release (PubMed:[23809162](#)). Mediates LCFAs anti-apoptotic effects (By similarity).

Cellular Location

[Isoform 1]: Cell membrane; Multi-pass membrane protein. Endosome membrane; Multi-pass membrane protein. Lysosome membrane; Multi-pass membrane protein. Note=Sorted to late endosome/lysosome compartments upon internalization.

Tissue Location

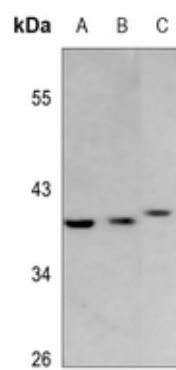
[Isoform 2]: The predominant isoform in human tissues. Expressed in adipose tissue, pancreatic islets, lung and brain. Expressed in alpha cells of pancreatic islets (PubMed:[24742677](#)) Expressed in primary cilia of perivascular preadipocytes of white adipose tissue (at protein level) (PubMed:[31761534](#))

Background

KLH-conjugated synthetic peptide encompassing a sequence within the center region of human GPR120. The exact sequence is proprietary.

Images

Western blot analysis of GPR120 expression in Hela (A), U2OS (B), rat liver (C) whole cell lysates.



Please note: All products are 'FOR RESEARCH USE ONLY. NOT FOR USE IN DIAGNOSTIC OR THERAPEUTIC PROCEDURES'.