

Anti-RIMKLB Antibody

Rabbit polyclonal antibody to RIMKLB

Catalog # AP60507

Product Information

Application	WB
Primary Accession	Q9ULI2
Other Accession	Q80WS1
Reactivity	Human, Mouse, Rat, Monkey, Bovine
Host	Rabbit
Clonality	Polyclonal
Calculated MW	42464

Additional Information

Gene ID	57494
Other Names	FAM80B; KIAA1238; Beta-citrylglutamate synthase B; N-acetyl-aspartylglutamate synthetase B; NAAG synthetase B; NAAGS; Ribosomal protein S6 modification-like protein B
Target/Specificity	Recognizes endogenous levels of RIMKLB protein.
Dilution	WB~~WB (1/500 - 1/1000)
Format	Liquid in 0.42% Potassium phosphate, 0.87% Sodium chloride, pH 7.3, 30% glycerol, and 0.09% (W/V) sodium azide.
Storage	Store at -20 °C.Stable for 12 months from date of receipt

Protein Information

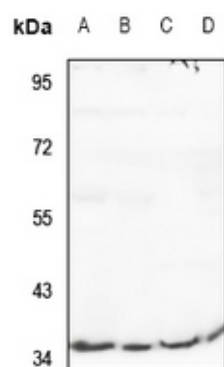
Name	RIMKLB
Synonyms	FAM80B, KIAA1238
Function	Catalyzes the synthesis of beta-citryl-L-glutamate and N-acetyl-L-aspartyl-L-glutamate. Beta-citryl-L-glutamate is synthesized more efficiently than N-acetyl-L-aspartyl-L-glutamate.
Cellular Location	Cytoplasm.

Background

KLH-conjugated synthetic peptide encompassing a sequence within the center region of human RIMKLB. The

exact sequence is proprietary.

Images



Western blot analysis of RIMKLB expression in LO2 (A), A549 (B), CT26 (C), PC12 (D) whole cell lysates.

Please note: All products are 'FOR RESEARCH USE ONLY. NOT FOR USE IN DIAGNOSTIC OR THERAPEUTIC PROCEDURES'.