

Anti-RRM2B Antibody

Rabbit polyclonal antibody to RRM2B

Catalog # AP60509

Product Information

Application	WB
Primary Accession	Q7LG56
Other Accession	Q6PEE3
Reactivity	Human, Mouse, Rat, Monkey
Host	Rabbit
Clonality	Polyclonal
Calculated MW	40737

Additional Information

Gene ID	50484
Other Names	P53R2; Ribonucleoside-diphosphate reductase subunit M2 B; TP53-inducible ribonucleotide reductase M2 B; p53-inducible ribonucleotide reductase small subunit 2-like protein; p53R2
Target/Specificity	Recognizes endogenous levels of RRM2B protein.
Dilution	WB~~WB (1/500 - 1/1000)
Format	Liquid in 0.42% Potassium phosphate, 0.87% Sodium chloride, pH 7.3, 30% glycerol, and 0.09% (W/V) sodium azide.
Storage	Store at -20 °C.Stable for 12 months from date of receipt

Protein Information

Name	RRM2B
Synonyms	P53R2
Function	Plays a pivotal role in cell survival by repairing damaged DNA in a p53/TP53-dependent manner. Supplies deoxyribonucleotides for DNA repair in cells arrested at G1 or G2. Contains an iron-tyrosyl free radical center required for catalysis. Forms an active ribonucleotide reductase (RNR) complex with RRM1 which is expressed both in resting and proliferating cells in response to DNA damage.
Cellular Location	Cytoplasm. Nucleus. Note=Translocates from cytoplasm to nucleus in response to DNA damage Widely expressed at a high level in skeletal muscle and at a weak level in

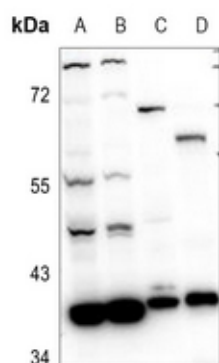
Tissue Location

thymus. Expressed in epithelial dysplasias and squamous cell carcinoma.

Background

KLH-conjugated synthetic peptide encompassing a sequence within the center region of human RRM2B. The exact sequence is proprietary.

Images



Western blot analysis of RRM2B expression in A375 (A), HCT116 (B), mouse brain (C), rat prostate (D) whole cell lysates.

Please note: All products are 'FOR RESEARCH USE ONLY. NOT FOR USE IN DIAGNOSTIC OR THERAPEUTIC PROCEDURES'.