

Anti-SMYD2 Antibody

Rabbit polyclonal antibody to SMYD2

Catalog # AP60513

Product Information

Application	WB
Primary Accession	Q9NRG4
Other Accession	Q8R5A0
Reactivity	Human, Mouse, Rat
Host	Rabbit
Clonality	Polyclonal
Calculated MW	49688

Additional Information

Gene ID	56950
Other Names	KMT3C; N-lysine methyltransferase SMYD2; HSKM-B; Histone methyltransferase SMYD2; Lysine N-methyltransferase 3C; SET and MYND domain-containing protein 2
Target/Specificity	KLH-conjugated synthetic peptide encompassing a sequence within the center region of human SMYD2. The exact sequence is proprietary.
Dilution	WB~~WB (1/500 - 1/1000)
Format	Liquid in 0.42% Potassium phosphate, 0.87% Sodium chloride, pH 7.3, 30% glycerol, and 0.09% (W/V) sodium azide.
Storage	Store at -20 °C.Stable for 12 months from date of receipt

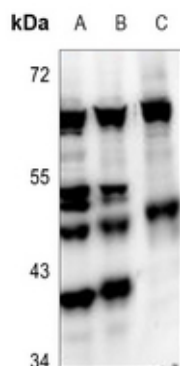
Protein Information

Name	SMYD2
Synonyms	KMT3C
Function	Protein-lysine N-methyltransferase that methylates both histones and non-histone proteins, including p53/TP53 and RB1. Specifically trimethylates histone H3 'Lys-4' (H3K4me3) in vivo. The activity requires interaction with HSP90alpha. Shows even higher methyltransferase activity on p53/TP53. Monomethylates 'Lys-370' of p53/TP53, leading to decreased DNA-binding activity and subsequent transcriptional regulation activity of p53/TP53. Monomethylates RB1 at 'Lys-860'.
Cellular Location	Cytoplasm, cytosol. Nucleus

Background

KLH-conjugated synthetic peptide encompassing a sequence within the center region of human SMYD2. The exact sequence is proprietary.

Images



Western blot analysis of SMYD2 expression in HEK293T (A), MCF7 (B), PC12 (C) whole cell lysates.

Please note: All products are 'FOR RESEARCH USE ONLY. NOT FOR USE IN DIAGNOSTIC OR THERAPEUTIC PROCEDURES'.