

# Anti-Alpha-synuclein (pY133) Antibody

Rabbit polyclonal antibody to Alpha-synuclein (pY133)

Catalog # AP60514

## Product Information

Application	WB, IHC
Primary Accession	<a href="#">P37840</a>
Other Accession	<a href="#">O55042</a>
Reactivity	Human, Mouse, Rat, Rabbit, Monkey, Pig, Bovine, SARS
Host	Rabbit
Clonality	Polyclonal
Calculated MW	14460

## Additional Information

Gene ID	6622
Other Names	NACP; PARK1; Alpha-synuclein; Non-A beta component of AD amyloid; Non-A4 component of amyloid precursor; NACP
Target/Specificity	Recognizes endogenous levels of Alpha-synuclein (pY133) protein.
Dilution	WB~~WB (1/500 - 1/1000), IHC (1/100 - 1/200) IHC~~WB (1/500 - 1/1000), IHC (1/100 - 1/200)
Format	Liquid in 0.42% Potassium phosphate, 0.87% Sodium chloride, pH 7.3, 30% glycerol, and 0.09% (W/V) sodium azide.
Storage	Store at -20 °C.Stable for 12 months from date of receipt

## Protein Information

Name	SNCA
Synonyms	NACP, PARK1
Function	Neuronal protein that plays several roles in synaptic activity such as regulation of synaptic vesicle trafficking and subsequent neurotransmitter release (PubMed: <a href="#">20798282</a> , PubMed: <a href="#">26442590</a> , PubMed: <a href="#">28288128</a> , PubMed: <a href="#">30404828</a> ). Participates as a monomer in synaptic vesicle exocytosis by enhancing vesicle priming, fusion and dilation of exocytotic fusion pores (PubMed: <a href="#">28288128</a> , PubMed: <a href="#">30404828</a> ). Mechanistically, acts by increasing local Ca(2+) release from microdomains which is essential for the enhancement of ATP-induced exocytosis (PubMed: <a href="#">30404828</a> ). Also acts as a molecular chaperone in its multimeric membrane-bound state, assisting in the folding of synaptic fusion components called SNAREs (Soluble NSF Attachment Protein REceptors) at presynaptic plasma membrane in

conjunction with cysteine string protein- $\alpha$ /DNAJC5 (PubMed:[20798282](#)). This chaperone activity is important to sustain normal SNARE-complex assembly during aging (PubMed:[20798282](#)). Also plays a role in the regulation of the dopamine neurotransmission by associating with the dopamine transporter (DAT1) and thereby modulating its activity (PubMed:[26442590](#)).

#### Cellular Location

Cytoplasm. Membrane Nucleus Synapse. Secreted. Cell projection, axon {ECO:0000250|UniProtKB:O55042}. Note=Membrane-bound in dopaminergic neurons (PubMed:15282274). Expressed and colocalized with SEPTIN4 in dopaminergic axon terminals, especially at the varicosities (By similarity). {ECO:0000250|UniProtKB:O55042, ECO:0000269|PubMed:15282274}

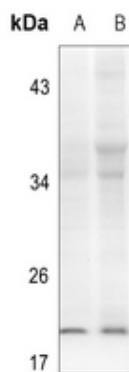
#### Tissue Location

Highly expressed in presynaptic terminals in the central nervous system. Expressed principally in brain

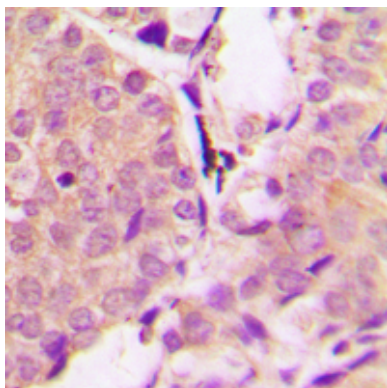
## Background

KLH-conjugated synthetic peptide encompassing a sequence within the C-term region of human Alpha-synuclein (pY133). The exact sequence is proprietary.

## Images



Western blot analysis of Alpha-synuclein (pY133) expression in mouse brain (A), rat brain (B) whole cell lysates.



Immunohistochemical analysis of Alpha-synuclein (pY133) staining in human prostate cancer formalin fixed paraffin embedded tissue section. The section was pre-treated using heat mediated antigen retrieval with sodium citrate buffer (pH 6.0). The section was then incubated with the antibody at room temperature and detected using an HRP conjugated compact polymer system. DAB was used as the chromogen. The section was then counterstained with haematoxylin and mounted with DPX.

Please note: All products are 'FOR RESEARCH USE ONLY. NOT FOR USE IN DIAGNOSTIC OR THERAPEUTIC PROCEDURES'.