

# Anti-PU.1 Antibody

Rabbit polyclonal antibody to PU.1

Catalog # AP60516

## Product Information

---

Application	WB, IF/IC, IHC
Primary Accession	<a href="#">P17947</a>
Other Accession	<a href="#">P17433</a>
Reactivity	Human, Mouse, Rat, Zebrafish, Pig, Chicken
Host	Rabbit
Clonality	Polyclonal
Calculated MW	31083

## Additional Information

---

Gene ID	6688
Other Names	Transcription factor PU.1; 31 kDa-transforming protein
Target/Specificity	Recognizes endogenous levels of PU.1 protein.
Dilution	WB~~WB (1/500 - 1/1000), IHC (1/100 - 1/200), IF/IC (1/100 - 1/500) IF/IC~~N/A IHC~~WB (1/500 - 1/1000), IHC (1/100 - 1/200), IF/IC (1/100 - 1/500)
Format	Liquid in 0.42% Potassium phosphate, 0.87% Sodium chloride, pH 7.3, 30% glycerol, and 0.09% (W/V) sodium azide.
Storage	Store at -20 °C.Stable for 12 months from date of receipt

## Protein Information

---

Name	SPI1
Function	Pioneer transcription factor, which controls hematopoietic cell fate by decompacting stem cell heterochromatin and allowing other transcription factors to enter otherwise inaccessible genomic sites. Once in open chromatin, can directly control gene expression by binding genetic regulatory elements and can also more broadly influence transcription by recruiting transcription factors, such as interferon regulatory factors (IRFs), to otherwise inaccessible genomic regions (PubMed: <a href="#">23658224</a> , PubMed: <a href="#">33951726</a> ). Transcriptionally activates genes important for myeloid and lymphoid lineages, such as CSF1R (By similarity). Transcriptional activation from certain promoters, possibly containing low affinity binding sites, is achieved cooperatively with other transcription factors. FCER1A transactivation is achieved in cooperation with GATA1 (By similarity). May be particularly important for the pro- to pre-B cell transition (PubMed: <a href="#">33951726</a> ). Binds (via

the ETS domain) onto the purine-rich DNA core sequence 5'-GAGGAA-3', also known as the PU-box (PubMed:[33951726](#)). In vitro can bind RNA and interfere with pre-mRNA splicing (By similarity).

#### Cellular Location

Nucleus {ECO:0000255 | PROSITE-ProRule:PRU00237, ECO:0000269 | PubMed:33951726}

#### Tissue Location

In the bone marrow, concentrated in hematopoietic stem cell, lymphoid progenitor, myeloid lineage (granulocyte macrophage progenitors, classical dendritic cells, monocytes) and B-cell clusters Among B-cells, predominantly expressed in pre-B1 cells (PubMed:33951726). Expressed in germinal center B-cells (PubMed:23166356).

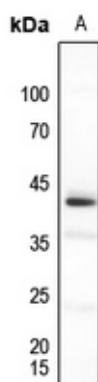
## Background

---

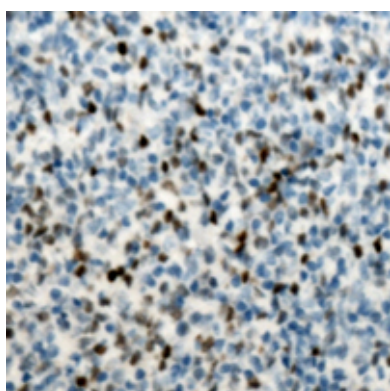
KLH-conjugated synthetic peptide encompassing a sequence within the center region of human PU.1. The exact sequence is proprietary.

## Images

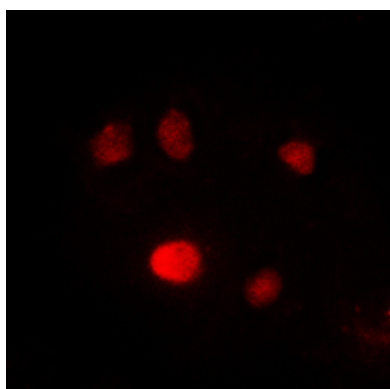
---



Western blot analysis of PU.1 expression in zebrafish (A) whole cell lysates.



Immunohistochemical analysis of PU.1 staining in human lymph node formalin fixed paraffin embedded tissue section. The section was pre-treated using heat mediated antigen retrieval with sodium citrate buffer (pH 6.0). The section was then incubated with the antibody at room temperature and detected using an HRP conjugated compact polymer system. DAB was used as the chromogen. The section was then counterstained with haematoxylin and mounted with DPX.



Immunofluorescent analysis of PU.1 staining in HepG2 cells. Formalin-fixed cells were permeabilized with 0.1% Triton X-100 in TBS for 5-10 minutes and blocked with 3% BSA-PBS for 30 minutes at room temperature. Cells were probed with the primary antibody in 3% BSA-PBS and incubated overnight at 4 °C in a humidified chamber. Cells were washed with PBST and incubated with a DyLight 594-conjugated secondary antibody (red) in PBS at room temperature in the dark.

Please note: All products are 'FOR RESEARCH USE ONLY. NOT FOR USE IN DIAGNOSTIC OR THERAPEUTIC PROCEDURES'.