

Anti-CD153 Antibody

Rabbit polyclonal antibody to CD153

Catalog # AP60519

Product Information

Application	WB
Primary Accession	P32971
Other Accession	P32972
Reactivity	Human, Mouse, Rat
Host	Rabbit
Clonality	Polyclonal
Calculated MW	26017

Additional Information

Gene ID	944
Other Names	CD30L; CD30LG; Tumor necrosis factor ligand superfamily member 8; CD30 ligand; CD30-L; CD153
Target/Specificity	KLH-conjugated synthetic peptide encompassing a sequence within the center region of human CD153. The exact sequence is proprietary.
Dilution	WB~~WB (1/500 - 1/1000)
Format	Liquid in 0.42% Potassium phosphate, 0.87% Sodium chloride, pH 7.3, 30% glycerol, and 0.09% (W/V) sodium azide.
Storage	Store at -20 °C.Stable for 12 months from date of receipt

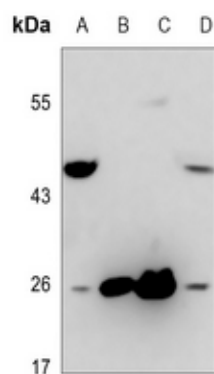
Protein Information

Name	TNFSF8
Synonyms	CD30L, CD30LG
Function	Cytokine that binds to TNFRSF8/CD30. Induces proliferation of T-cells.
Cellular Location	Membrane; Single-pass type II membrane protein.

Background

KLH-conjugated synthetic peptide encompassing a sequence within the center region of human CD153. The exact sequence is proprietary.

Images



Western blot analysis of CD153 expression in mouse liver (A), mouse spleen (B), rat liver (C), rat spleen (D) whole cell lysates.

Please note: All products are 'FOR RESEARCH USE ONLY. NOT FOR USE IN DIAGNOSTIC OR THERAPEUTIC PROCEDURES'.