

Anti-cTnI (pS22/S23) Antibody

Rabbit polyclonal antibody to cTnI (pS22/S23)

Catalog # AP60520

Product Information

Application	WB, IHC
Primary Accession	P19429
Other Accession	P48787
Reactivity	Human, Mouse, Rat, Rabbit, Pig
Host	Rabbit
Clonality	Polyclonal
Calculated MW	24008

Additional Information

Gene ID	7137
Other Names	TNNI3; TNNC1; Troponin I, cardiac muscle; Cardiac troponin I
Target/Specificity	Recognizes endogenous levels of cTnI (pS22/S23) protein.
Dilution	WB~~WB (1/500 - 1/1000), IHC (1/100 - 1/200) IHC~~WB (1/500 - 1/1000), IHC (1/100 - 1/200)
Format	Liquid in 0.42% Potassium phosphate, 0.87% Sodium chloride, pH 7.3, 30% glycerol, and 0.09% (W/V) sodium azide.
Storage	Store at -20 °C.Stable for 12 months from date of receipt

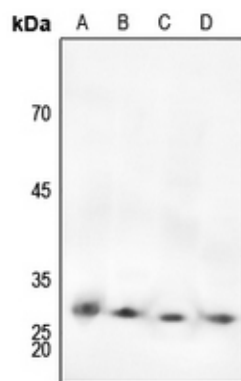
Protein Information

Name	TNNI3
Synonyms	TNNC1
Function	Troponin I is the inhibitory subunit of troponin, the thin filament regulatory complex which confers calcium-sensitivity to striated muscle actomyosin ATPase activity.

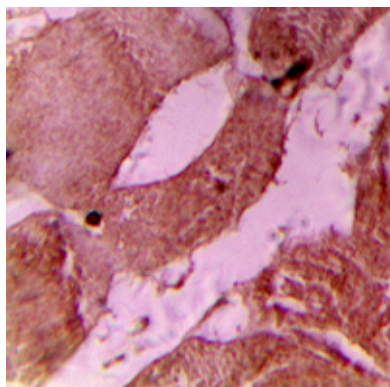
Background

KLH-conjugated synthetic peptide encompassing a sequence within the N-term region of human cTnI (pS22/S23). The exact sequence is proprietary.

Images



Western blot analysis of cTnI (pS22/S23) expression in mouse heart (A), mouse kidney (B), rat heart (C), rat kidney (D) whole cell lysates.



Immunohistochemical analysis of cTnI (pS22/S23) staining in human heart formalin fixed paraffin embedded tissue section. The section was pre-treated using heat mediated antigen retrieval with sodium citrate buffer (pH 6.0). The section was then incubated with the antibody at room temperature and detected using an HRP conjugated compact polymer system. DAB was used as the chromogen. The section was then counterstained with haematoxylin and mounted with DPX.

Please note: All products are 'FOR RESEARCH USE ONLY. NOT FOR USE IN DIAGNOSTIC OR THERAPEUTIC PROCEDURES'.