

Anti-Septin 3 Antibody

Rabbit polyclonal antibody to Septin 3
Catalog # AP60529

Product Information

Application	WB
Primary Accession	Q9UH03
Other Accession	Q9Z1S5
Reactivity	Human, Mouse, Rat, Zebrafish, Bovine
Host	Rabbit
Clonality	Polyclonal
Calculated MW	40704

Additional Information

Gene ID	55964
Other Names	SEP3; Neuronal-specific septin-3
Target/Specificity	KLH-conjugated synthetic peptide encompassing a sequence within the center region of human Septin 3. The exact sequence is proprietary.
Dilution	WB~~WB (1/500 - 1/1000)
Format	Liquid in 0.42% Potassium phosphate, 0.87% Sodium chloride, pH 7.3, 30% glycerol, and 0.09% (W/V) sodium azide.
Storage	Store at -20 °C.Stable for 12 months from date of receipt

Protein Information

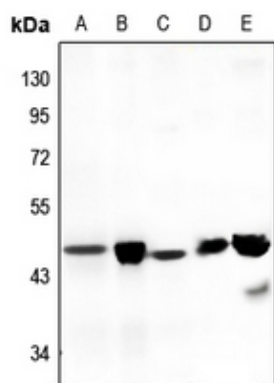
Name	SEPTIN3 (HGNC:10750)
Synonyms	SEP3, SEPT3
Function	Filament-forming cytoskeletal GTPase (By similarity). May play a role in cytokinesis (Potential).
Cellular Location	Cytoplasm. Cytoplasm, cytoskeleton. Synapse
Tissue Location	Brain-specific.

Background

KLH-conjugated synthetic peptide encompassing a sequence within the center region of human Septin 3.

The exact sequence is proprietary.

Images



Western blot analysis of Septin 3 expression in mouse brain (A), rat brain (B), Hela (C), mouse kidney (D), rat kidney (E) whole cell lysates.

Please note: All products are 'FOR RESEARCH USE ONLY. NOT FOR USE IN DIAGNOSTIC OR THERAPEUTIC PROCEDURES'.