

Anti-Adenosine A3 Receptor Antibody

Rabbit polyclonal antibody to Adenosine A3 Receptor

Catalog # AP60531

Product Information

Application	WB, IF/IC
Primary Accession	P0DMS8
Other Accession	Q61618
Reactivity	Human, Mouse, Rat
Host	Rabbit
Clonality	Polyclonal
Calculated MW	36185

Additional Information

Gene ID	140
Other Names	Adenosine receptor A3
Target/Specificity	KLH-conjugated synthetic peptide encompassing a sequence within the C-term region of human Adenosine A3 Receptor. The exact sequence is proprietary.
Dilution	WB~~WB (1/500 - 1/1000), IF/IC (1/100 - 1/500) IF/IC~~N/A
Format	Liquid in 0.42% Potassium phosphate, 0.87% Sodium chloride, pH 7.3, 30% glycerol, and 0.09% (W/V) sodium azide.
Storage	Store at -20 °C.Stable for 12 months from date of receipt

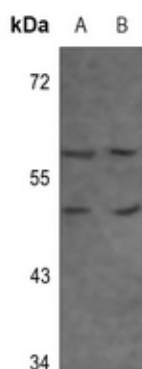
Protein Information

Name	ADORA3 (HGNC:268)
Function	[Isoform 2]: Receptor for adenosine. The activity of this receptor is mediated by G proteins which inhibits adenylyl cyclase (PubMed: 8234299).
Cellular Location	Cell membrane {ECO:0000250 UniProtKB:Q28309}; Multi-pass membrane protein
Tissue Location	Expressed in the lung and bone. Expressed at lower levels in osteosarcoma tissues (at protein level)

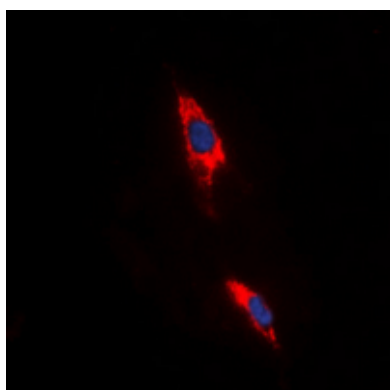
Background

KLH-conjugated synthetic peptide encompassing a sequence within the C-term region of human Adenosine A3 Receptor. The exact sequence is proprietary.

Images



Western blot analysis of Adenosine A3 Receptor expression in MCF7 (A), H1792 (B) whole cell lysates.



Immunofluorescent analysis of Adenosine A3 Receptor staining in HeLa cells. Formalin-fixed cells were permeabilized with 0.1% Triton X-100 in TBS for 5-10 minutes and blocked with 3% BSA-PBS for 30 minutes at room temperature. Cells were probed with the primary antibody in 3% BSA-PBS and incubated overnight at 4 °C in a humidified chamber. Cells were washed with PBST and incubated with a DyLight 594-conjugated secondary antibody (red) in PBS at room temperature in the dark. DAPI was used to stain the cell nuclei (blue).

Please note: All products are 'FOR RESEARCH USE ONLY. NOT FOR USE IN DIAGNOSTIC OR THERAPEUTIC PROCEDURES'.