

Anti-BDKRB1 Antibody

Rabbit polyclonal antibody to BDKRB1

Catalog # AP60543

Product Information

Application	WB, IF/IC
Primary Accession	P46663
Reactivity	Human
Host	Rabbit
Clonality	Polyclonal
Calculated MW	40495

Additional Information

Gene ID	623
Other Names	BRADYB1; B1 bradykinin receptor; B1R; BK-1 receptor
Target/Specificity	KLH-conjugated synthetic peptide encompassing a sequence within the center region of human BDKRB1. The exact sequence is proprietary.
Dilution	WB~~WB (1/500 - 1/1000), IF/IC (1/100 - 1/500) IF/IC~~N/A
Format	Liquid in 0.42% Potassium phosphate, 0.87% Sodium chloride, pH 7.3, 30% glycerol, and 0.09% (W/V) sodium azide.
Storage	Store at -20 °C.Stable for 12 months from date of receipt

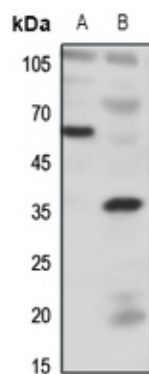
Protein Information

Name	BDKRB1
Synonyms	BRADYB1
Function	This is a receptor for bradykinin. Could be a factor in chronic pain and inflammation.
Cellular Location	Cell membrane; Multi-pass membrane protein

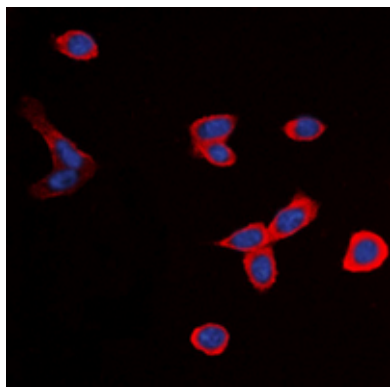
Background

KLH-conjugated synthetic peptide encompassing a sequence within the center region of human BDKRB1. The exact sequence is proprietary.

Images



Western blot analysis of BDKRB1 expression in HeLa (A), HepG2 (B) whole cell lysates.



Immunofluorescent analysis of BDKRB1 staining in Saos2 cells. Formalin-fixed cells were permeabilized with 0.1% Triton X-100 in TBS for 5-10 minutes and blocked with 3% BSA-PBS for 30 minutes at room temperature. Cells were probed with the primary antibody in 3% BSA-PBS and incubated overnight at 4 °C in a humidified chamber. Cells were washed with PBST and incubated with a DyLight 594-conjugated secondary antibody (red) in PBS at room temperature in the dark. DAPI was used to stain the cell nuclei (blue).

Please note: All products are 'FOR RESEARCH USE ONLY. NOT FOR USE IN DIAGNOSTIC OR THERAPEUTIC PROCEDURES'.