

Anti-CLIC3 Antibody

Rabbit polyclonal antibody to CLIC3

Catalog # AP60554

Product Information

Application	WB
Primary Accession	O95833
Reactivity	Human, Mouse, Rat
Host	Rabbit
Clonality	Polyclonal
Calculated MW	26648

Additional Information

Gene ID	9022
Other Names	Chloride intracellular channel protein 3
Target/Specificity	KLH-conjugated synthetic peptide encompassing a sequence within the center region of human CLIC3. The exact sequence is proprietary.
Dilution	WB~~WB (1/500 - 1/1000)
Format	Liquid in 0.42% Potassium phosphate, 0.87% Sodium chloride, pH 7.3, 30% glycerol, and 0.09% (W/V) sodium azide.
Storage	Store at -20 °C.Stable for 12 months from date of receipt

Protein Information

Name	CLIC3 {ECO:0000303 PubMed:32066374, ECO:0000312 HGNC:HGNC:2064}
Function	In the soluble state, catalyzes glutaredoxin-like thiol disulfide exchange reactions with reduced glutathione as electron donor (PubMed: 28198360 , PubMed: 37759794). Reduced in a glutathione-dependent way and secreted into the extracellular matrix where it activates TGM2 and promotes blood vessel growth during tissue remodeling as occurs in tumorigenesis. Can reduce specific cysteines in TGM2 and regulate cofactor binding (PubMed: 28198360). Can insert into membranes and form outwardly rectifying chloride ion channels. May participate in cellular growth control.
Cellular Location	Nucleus. Membrane; Single-pass membrane protein. Cell membrane; Single-pass membrane protein. Cytoplasm. Secreted, extracellular space, extracellular matrix. Note=Predominantly nuclear. Some protein was found in the cytoplasm. Exists both as soluble cytoplasmic protein and as membrane protein with probably a single transmembrane domain (By similarity). Secreted into the extracellular matrix by activated fibroblasts. {ECO:0000250,

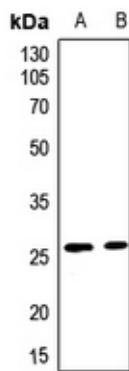
Tissue Location

Detected in placenta (at protein level). Widely expressed. High expression is found in placenta followed by lung and heart. Low expression in skeletal muscle, kidney and pancreas

Background

KLH-conjugated synthetic peptide encompassing a sequence within the center region of human CLIC3. The exact sequence is proprietary.

Images



Western blot analysis of CLIC3 expression in mouse testis (A), rat lung (B) whole cell lysates.

Please note: All products are 'FOR RESEARCH USE ONLY. NOT FOR USE IN DIAGNOSTIC OR THERAPEUTIC PROCEDURES'.