

Anti-Zeta COP Antibody

Rabbit polyclonal antibody to Zeta COP
Catalog # AP60557

Product Information

Application	WB, IHC
Primary Accession	P61923
Other Accession	P61924
Reactivity	Human, Mouse, Rat, Monkey, Bovine
Host	Rabbit
Clonality	Polyclonal
Calculated MW	20198

Additional Information

Gene ID	22818
Other Names	COPZ; Coatomer subunit zeta-1; Zeta-1-coat protein; Zeta-1 COP
Target/Specificity	Recognizes endogenous levels of Zeta COP protein.
Dilution	WB~~WB (1/500 - 1/1000), IHC (1/100 - 1/200) IHC~~WB (1/500 - 1/1000), IHC (1/100 - 1/200)
Format	Liquid in 0.42% Potassium phosphate, 0.87% Sodium chloride, pH 7.3, 30% glycerol, and 0.09% (W/V) sodium azide.
Storage	Store at -20 °C.Stable for 12 months from date of receipt

Protein Information

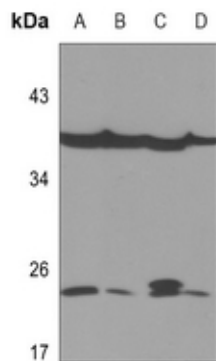
Name	COPZ1
Synonyms	COPZ
Function	The coatomer is a cytosolic protein complex that binds to dilysine motifs and reversibly associates with Golgi non-clathrin- coated vesicles, which further mediate biosynthetic protein transport from the ER, via the Golgi up to the trans Golgi network. Coatomer complex is required for budding from Golgi membranes, and is essential for the retrograde Golgi-to-ER transport of dilysine-tagged proteins (By similarity). The zeta subunit may be involved in regulating the coat assembly and, hence, the rate of biosynthetic protein transport due to its association-dissociation properties with the coatomer complex (By similarity).
Cellular Location	Cytoplasm. Golgi apparatus membrane; Peripheral membrane protein; Cytoplasmic side. Cytoplasmic vesicle, COPI-coated vesicle membrane;

Peripheral membrane protein; Cytoplasmic side. Note=The coatomer is cytoplasmic or polymerized on the cytoplasmic side of the Golgi, as well as on the vesicles/buds originating from it.

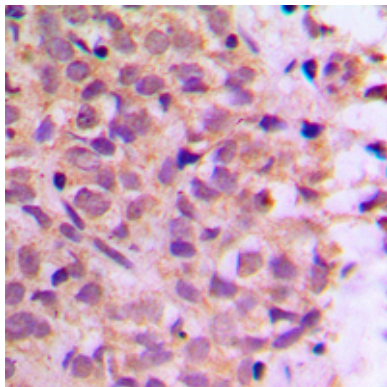
Background

KLH-conjugated synthetic peptide encompassing a sequence within the N-term region of human Zeta COP. The exact sequence is proprietary.

Images



Western blot analysis of Zeta COP expression in mouse liver (A), mouse lung (B), rat liver (C), rat lung (D) whole cell lysates.



Immunohistochemical analysis of Zeta COP staining in human breast cancer formalin fixed paraffin embedded tissue section. The section was pre-treated using heat mediated antigen retrieval with sodium citrate buffer (pH 6.0). The section was then incubated with the antibody at room temperature and detected using an HRP conjugated compact polymer system. DAB was used as the chromogen. The section was then counterstained with haematoxylin and mounted with DPX.

Please note: All products are 'FOR RESEARCH USE ONLY. NOT FOR USE IN DIAGNOSTIC OR THERAPEUTIC PROCEDURES'.