

# Anti-ELOVL5 Antibody

Rabbit polyclonal antibody to ELOVL5

Catalog # AP60562

## Product Information

Application	WB, IHC
Primary Accession	<a href="#">Q9NYP7</a>
Reactivity	Human, Monkey
Host	Rabbit
Clonality	Polyclonal
Calculated MW	35293

## Additional Information

Gene ID	60481
Other Names	ELOVL2; Elongation of very long chain fatty acids protein 5; 3-keto acyl-CoA synthase ELOVL5; ELOVL fatty acid elongase 5; ELOVL FA elongase 5; Fatty acid elongase 1; hELO1; Very-long-chain 3-oxoacyl-CoA synthase 5
Target/Specificity	Recognizes endogenous levels of ELOVL5 protein.
Dilution	WB~~WB (1/500 - 1/1000), IHC (1/100 - 1/200) IHC~~WB (1/500 - 1/1000), IHC (1/100 - 1/200)
Format	Liquid in 0.42% Potassium phosphate, 0.87% Sodium chloride, pH 7.3, 30% glycerol, and 0.09% (W/V) sodium azide.
Storage	Store at -20 °C.Stable for 12 months from date of receipt

## Protein Information

Name	ELOVL5 {ECO:0000255 HAMAP-Rule:MF_03205}
Synonyms	ELOVL2
Function	Catalyzes the first and rate-limiting reaction of the four reactions that constitute the long-chain fatty acids elongation cycle. This endoplasmic reticulum-bound enzymatic process allows the addition of 2 carbons to the chain of long- and very long-chain fatty acids (VLCFAs) per cycle. Condensing enzyme that acts specifically toward polyunsaturated acyl-CoA with the higher activity toward C18:3(n-6) acyl-CoA. May participate in the production of monounsaturated and of polyunsaturated VLCFAs of different chain lengths that are involved in multiple biological processes as precursors of membrane lipids and lipid mediators (By similarity) (PubMed: <a href="#">10970790</a> , PubMed: <a href="#">20937905</a> ). In conditions where the essential linoleic and alpha linoleic fatty acids are lacking it is also involved in the synthesis of Mead acid

from oleic acid (By similarity).

### Cellular Location

Endoplasmic reticulum membrane {ECO:0000255 | HAMAP-Rule:MF\_03205, ECO:0000269 | PubMed:20937905}; Multi- pass membrane protein {ECO:0000255 | HAMAP-Rule:MF\_03205}. Cell projection, dendrite {ECO:0000255 | HAMAP-Rule:MF\_03205, ECO:0000269 | PubMed:25065913}. Note=In Purkinje cells, the protein localizes to the soma and proximal portion of the dendritic tree {ECO:0000255 | HAMAP-Rule:MF\_03205, ECO:0000269 | PubMed:25065913}

### Tissue Location

Ubiquitous. Highly expressed in the adrenal gland and testis. Weakly expressed in prostate, lung and brain. Expressed in the cerebellum.

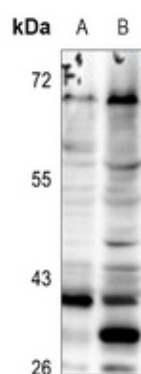
## Background

---

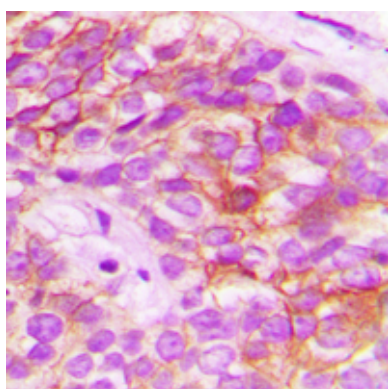
KLH-conjugated synthetic peptide encompassing a sequence within the C-term region of human ELOVL5. The exact sequence is proprietary.

## Images

---



Western blot analysis of ELOVL5 expression in HEK293T (A), COS7 (B) whole cell lysates.



Immunohistochemical analysis of ELOVL5 staining in human breast cancer formalin fixed paraffin embedded tissue section. The section was pre-treated using heat mediated antigen retrieval with sodium citrate buffer (pH 6.0). The section was then incubated with the antibody at room temperature and detected using an HRP conjugated compact polymer system. DAB was used as the chromogen. The section was then counterstained with haematoxylin and mounted with DPX.

Please note: All products are 'FOR RESEARCH USE ONLY. NOT FOR USE IN DIAGNOSTIC OR THERAPEUTIC PROCEDURES'.