

Anti-Estrogen Receptor beta (pS105) Antibody

Rabbit polyclonal antibody to Estrogen Receptor beta (pS105)

Catalog # AP60563

Product Information

| | |
|-------------------|-------------------------------|
| Application | WB, IF/IC |
| Primary Accession | Q92731 |
| Other Accession | O08537 |
| Reactivity | Human, Mouse, Rat, Drosophila |
| Host | Rabbit |
| Clonality | Polyclonal |
| Calculated MW | 59216 |

Additional Information

| | |
|--------------------|---|
| Gene ID | 2100 |
| Other Names | ESTRB; NR3A2; Estrogen receptor beta; ER-beta; Nuclear receptor subfamily 3 group A member 2 |
| Target/Specificity | Recognizes endogenous levels of Estrogen Receptor beta (pS105) protein. |
| Dilution | WB~~WB (1/500 - 1/1000), IF/IC (1/100 - 1/500) IF/IC~~N/A |
| Format | Liquid in 0.42% Potassium phosphate, 0.87% Sodium chloride, pH 7.3, 30% glycerol, and 0.09% (W/V) sodium azide. |
| Storage | Store at -20 °C.Stable for 12 months from date of receipt |

Protein Information

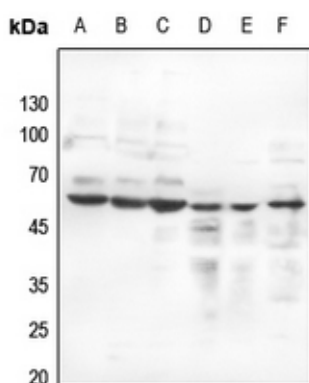
| | |
|-------------------|---|
| Name | ESR2 |
| Synonyms | ESTRB, NR3A2 |
| Function | Nuclear hormone receptor. Binds estrogens with an affinity similar to that of ESR1/ER-alpha, and activates expression of reporter genes containing estrogen response elements (ERE) in an estrogen- dependent manner (PubMed: 20074560). |
| Cellular Location | Nucleus {ECO:0000255 PROSITE-ProRule:PRU00407, ECO:0000269 PubMed:19126643, ECO:0000269 PubMed:20074560} |
| Tissue Location | [Isoform 1]: Expressed in testis and ovary, and at a lower level in heart, brain, placenta, liver, skeletal muscle, spleen, thymus, prostate, colon, bone marrow, mammary gland and uterus Also found in uterine bone, breast, and ovarian tumor cell lines, but not in colon and liver tumors. [Isoform 4]: Expressed in |

the testis. [Isoform 6]: Expressed in testis, placenta, skeletal muscle, spleen and leukocytes, and at a lower level in heart, lung, liver, kidney, pancreas, thymus, prostate, colon, small intestine, bone marrow, mammary gland and uterus. Not expressed in brain.

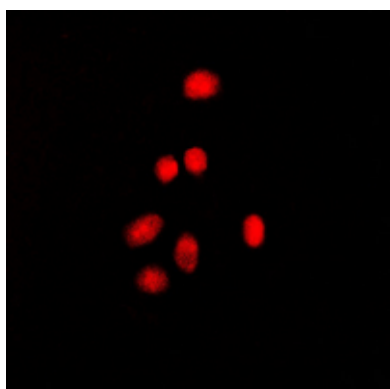
Background

KLH-conjugated synthetic peptide encompassing a sequence within the center region of human Estrogen Receptor beta. The exact sequence is proprietary.

Images



Western blot analysis of Estrogen Receptor beta (pS105) expression in HEK293T (A), HeLa (B), A375 (C), mouse spleen (D), rat spleen (E), rat testis (F) whole cell lysates.



Immunofluorescent analysis of Estrogen Receptor beta (pS105) staining in MCF7 cells. Formalin-fixed cells were permeabilized with 0.1% Triton X-100 in TBS for 5-10 minutes and blocked with 3% BSA-PBS for 30 minutes at room temperature. Cells were probed with the primary antibody in 3% BSA-PBS and incubated overnight at 4 °C in a humidified chamber. Cells were washed with PBST and incubated with a DyLight 594-conjugated secondary antibody (red) in PBS at room temperature in the dark.

Please note: All products are 'FOR RESEARCH USE ONLY. NOT FOR USE IN DIAGNOSTIC OR THERAPEUTIC PROCEDURES'.