

Anti-FGF22 Antibody

Rabbit polyclonal antibody to FGF22

Catalog # AP60564

Product Information

Application	WB, IF/IC
Primary Accession	Q9HCT0
Other Accession	Q9ESS2
Reactivity	Human, Mouse, Rat
Host	Rabbit
Clonality	Polyclonal
Calculated MW	19663

Additional Information

Gene ID	27006
Other Names	Fibroblast growth factor 22; FGF-22
Target/Specificity	Recognizes endogenous levels of FGF22 protein.
Dilution	WB~~WB (1/500 - 1/1000), IF/IC (1/100 - 1/500) IF/IC~~N/A
Format	Liquid in 0.42% Potassium phosphate, 0.87% Sodium chloride, pH 7.3, 30% glycerol, and 0.09% (W/V) sodium azide.
Storage	Store at -20 °C.Stable for 12 months from date of receipt

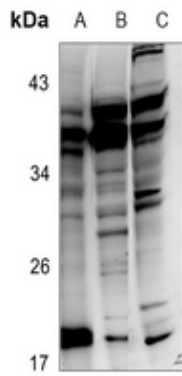
Protein Information

Name	FGF22
Function	Plays a role in the fasting response, glucose homeostasis, lipolysis and lipogenesis. Can stimulate cell proliferation (in vitro). May be involved in hair development.
Cellular Location	Secreted.

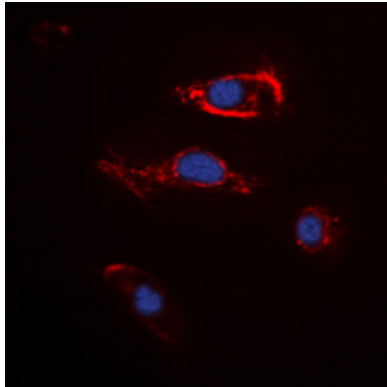
Background

KLH-conjugated synthetic peptide encompassing a sequence within the center region of human FGF22. The exact sequence is proprietary.

Images



Western blot analysis of FGF22 expression in rat skin (A), HEK293T (B), BV2 (C) whole cell lysates.



Immunofluorescent analysis of FGF22 staining in K562 cells. Formalin-fixed cells were permeabilized with 0.1% Triton X-100 in TBS for 5-10 minutes and blocked with 3% BSA-PBS for 30 minutes at room temperature. Cells were probed with the primary antibody in 3% BSA-PBS and incubated overnight at 4 °C in a humidified chamber. Cells were washed with PBST and incubated with a DyLight 594-conjugated secondary antibody (red) in PBS at room temperature in the dark. DAPI was used to stain the cell nuclei (blue).

Please note: All products are 'FOR RESEARCH USE ONLY. NOT FOR USE IN DIAGNOSTIC OR THERAPEUTIC PROCEDURES'.