

Anti-GPR101 Antibody

Rabbit polyclonal antibody to GPR101
Catalog # AP60566

Product Information

Application	WB, IF/IC
Primary Accession	Q96P66
Reactivity	Human, Mouse, Rat
Host	Rabbit
Clonality	Polyclonal
Calculated MW	56716

Additional Information

Gene ID	83550
Other Names	Probable G-protein coupled receptor 101
Target/Specificity	KLH-conjugated synthetic peptide encompassing a sequence within the center region of human GPR101. The exact sequence is proprietary.
Dilution	WB~~WB (1/500 - 1/1000), IF/IC (1/100 - 1/500) IF/IC~~N/A
Format	Liquid in 0.42% Potassium phosphate, 0.87% Sodium chloride, pH 7.3, 30% glycerol, and 0.09% (W/V) sodium azide.
Storage	Store at -20 °C. Stable for 12 months from date of receipt

Protein Information

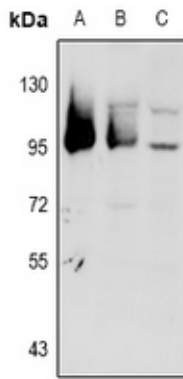
Name	GPR101
Function	Orphan receptor.
Cellular Location	Cell membrane; Multi-pass membrane protein.

Background

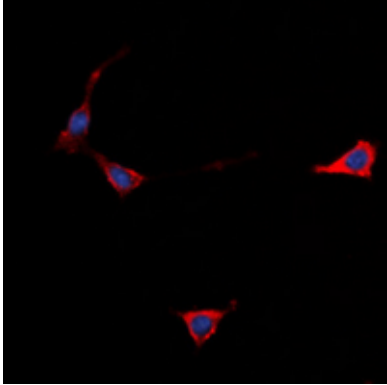
KLH-conjugated synthetic peptide encompassing a sequence within the center region of human GPR101. The exact sequence is proprietary.

Images

Western blot analysis of GPR101 expression in BV2 (A),



PC12 (B), A549 (C) whole cell lysates.



Immunofluorescent analysis of GPR101 staining in Jurkat cells. Formalin-fixed cells were permeabilized with 0.1% Triton X-100 in TBS for 5-10 minutes and blocked with 3% BSA-PBS for 30 minutes at room temperature. Cells were probed with the primary antibody in 3% BSA-PBS and incubated overnight at 4 °C in a humidified chamber. Cells were washed with PBST and incubated with a DyLight 594-conjugated secondary antibody (red) in PBS at room temperature in the dark. DAPI was used to stain the cell nuclei (blue).

Please note: All products are 'FOR RESEARCH USE ONLY. NOT FOR USE IN DIAGNOSTIC OR THERAPEUTIC PROCEDURES'.