

Anti-GPR113 Antibody

Rabbit polyclonal antibody to GPR113

Catalog # AP60567

Product Information

Application	WB
Primary Accession	Q8IZF5
Reactivity	Human, Mouse
Host	Rabbit
Clonality	Polyclonal
Calculated MW	116341

Additional Information

Gene ID	165082
Other Names	PGR23; Probable G-protein coupled receptor 113; G-protein coupled receptor PGR23
Target/Specificity	KLH-conjugated synthetic peptide encompassing a sequence within the N-term region of human GPR113. The exact sequence is proprietary.
Dilution	WB~~WB (1/500 - 1/1000)
Format	Liquid in 0.42% Potassium phosphate, 0.87% Sodium chloride, pH 7.3, 30% glycerol, and 0.09% (W/V) sodium azide.
Storage	Store at -20 °C.Stable for 12 months from date of receipt

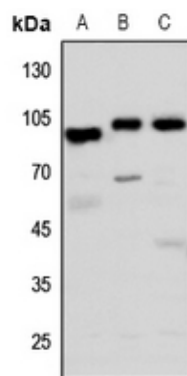
Protein Information

Name	ADGRF3
Synonyms	GPR113, PGR23
Function	Orphan receptor.
Cellular Location	Membrane; Multi-pass membrane protein

Background

KLH-conjugated synthetic peptide encompassing a sequence within the N-term region of human GPR113. The exact sequence is proprietary.

Images



Western blot analysis of GPR113 expression in HEK293T (A), Hela (B), mouse brain (C) whole cell lysates.

Please note: All products are 'FOR RESEARCH USE ONLY. NOT FOR USE IN DIAGNOSTIC OR THERAPEUTIC PROCEDURES'.